

BAY AREA WOODWORKERS ASSOCIATION

MEETING ANNOUNCEMENTS

JUNE 1999

June 17 Meeting

3rd Thursday

REFRESHMENTS 7:00PM

MEETING STARTS 7:30PM

How to get to tonight's meeting:

Jeff's shop is in the Bay View section of SF.

Approaching from 101, from either north or south, exit onto Third Street and head north. Yosemite Avenue is about 3/4 miles ahead. Turn left onto Yosemite (westward). Jeff's shop is at 1775, a large gray, multi-storied building on the left.

There is perpendicular parking on the street. People will guide you to Jeff's shop.

Take a map, but if you get lost, call 415/822-3241 for directions.

Jeffrey Hunt Woodworking

1775 Yosemite Avenue, San Francisco

415/822-3241

Jeff Hunt is a designer and builder of high quality custom furniture. He specializes in casework, chairs and tables. He also builds a line of limited production lamps and beds.

Jeff grew up in Ohio and earned a B.A. degree in Philosophy from the University of Akron. After moving to California, he obtained a MBA from Golden Gate University and studied woodworking at Laney College.

He strives for designs that are timeless - ones that are easy to live with and harmoniously balance aesthetics with functionality. Jeff started his woodworking career building custom pool tables. He has been in his current shop for 2 years.

Come see Jeff's shop, examples of his furniture and hear about what makes him tick.

OFFICERS

President Mike Bray 510/595-8168
 Vice Pres. Linda Salter 650/365-4093
 Secretary Connie Voos 650/508-9384
 Treasurer Tony Fanning
 and Robie Fanning 650/323-1183
 Newsletter Craig Mineweaser : 408/926-1900

COMMITTEE CHAIRPERSONS

Program Arnie Champagne . 415/282-1704
 and Jay Perrine 408/367-8227
 Hospitality Vincent Dellachiesa 650/345-7529
 Membership ... Pending
 Shows Pending
 Outreach Bill Henzel 650/349-3062
 and Allen Harrison 650/873-4831
 Librarian Rodney Finlay 650/349-3766
 Webmaster Jim Voos 650/508-9384

For any questions or information about BAWA programs, contact Arnie Champagne or Jay Perrine.

LAST MEETING

by Connie Voos

This month's meeting was a joint meeting of BAWA and Peninsula Woodworkers Association so our business meeting was very brief. President Mike Bray announced that board meeting will be held at Vice President Linda Salter's house within next few weeks. Co-Treasurer Robbie Fanning showed off her pictures from the trip to Mendocino/Fort Bragg that many members made last month to see the woodworking exhibits. Vice President Linda Salter announced the multi-club picnic on August 7th (see p. 2) and both clubs decided to charge \$4.00 per ticket to cover costs. The Fannings, our co-treasurers, will not be at our June meeting, so give your money for the picnic or for membership fees to Secretary Connie Voos. Member Gene Wagg passed out templates for hobby

(continued on page 10)

Upcoming 1999 BAWA Meetings

Have ideas for programs for 1999? Call Arnie at 415/282-1704 or Jay at 408/327-8667. Make our meetings what you want them to be!

CLASSIFIEDS

Members, if you have a woodworking tool or materials for sale, place your add here. You know it will go to a good home.

Hardwood: Japanese White Oak 1 3/4", \$10/BF; Black Oak, 1/2" surfaced, 3 to 7' long, \$1/BF; Phillipine Mahogany, 3/4" x 10 1/2" x 9' (10 pieces), \$70 lot; English Walnut 2 1/2" x 20" x 54" slab with nice pattern, \$70; Thailand Teak: plywood, 1/4" and 1/2" thick, make offer; Sycamore, quartersawn, 2" and 4" thick, some spalted \$5-7/BF. Call 510/797-9046.

LOST & FOUND

Curved Putty Knife

After last month's Christmas-in-April work session at the Audrey Smith Children's Center in SF. Call Bill Henzel at 650/349-3062 to claim.

SEND IT IN

Have something you want published in this newsletter? Tell our members about: Ideas for future meetings, photographs, announcements, exhibits, shows or events. Or let the editor know if a mistake has been made.

Send to:

BAWA Newsletter Editor

3251 Almansa Court

San Jose, CA 95127-1001

or

408/926-1900 voice

408/926-7078 fax

researchchem@msn.com e-mail

Next issue DEADLINE:

June 30, 1999

BAWA EVENT HORIZON

Toy Making Party, Part Duex Wooden Animals

Saturday, July 17

Our next toy making workshop will be in San Mateo on Saturday, July 17 at Bill Henzel's shop. We will be making toy frogs, seal, whales, rabbits and hippos! The toys have animated movements when pushed or pulled. We are looking for wood cut-offs of 13/4" thick x 6" or wider and x 12" or longer. Any hardwood will work, however cherry, walnut or maple would be ideal.

Sign up for this fun workshop at our next meeting or call Bill Henzel at 650/349-3062 or Allen Harrison at 650/873-4831. Also we are soliciting input for our toy donations this year. Please add your suggestions to the list of donation sites at our next meeting or call Allen with your suggestions.

First Annual Multi-Club Picnic!

on

Saturday, August 7th, 1999

at

Palo Alto Elks Club Picnic Area

4249 El Camino Real, Palo Alto

\$4.00 per person Starts at 10:00 a.m.

BAWA is hosting the first annual woodworkers picnic. Bring some of your best work to show off as there will be:

A "Show & Tell" Table

Huge 2 x 4 Contest - all clubs participating according to rules listed on p. 9 of this issue

Tool Swap - bring tools you no longer use and sell or trade them

A Drawing

A potluck BBQ with each family bringing their own meat and one dish to share. Also bring your own drinks (NO ALCOHOL) and utensils.

To avoid having 100 salads and only 2 desserts, shared dishes are assigned by the first letter of your last name:

A-F.....Appetizer

G-L.....Salad

M-R.....Side Dish (Veggie, etc.)

S-Z.....Dessert

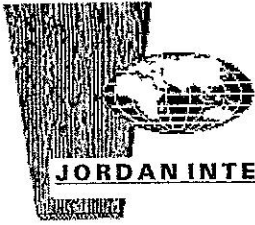
For more info, or if questions contact Linda Salter at 650/365-4093 or LindaSalter@earthlink.net.

NOTES ABOUT THIS ISSUE

by The Editor

1. Thanks to Allen Harrison, Linda Salter, Bill Small and Connie Voos for contributing to this issue.

2. If you have any corrections to this newsletter, or to your name tag, call write or email to the addresses at left.



EXPORTS . IMPORTS
TIMBERS
OF THE WORLD

Offering wholesale and contractor prices to **BAWA** members

PHONE: 650/592-7725
FAX: 650/592-7729
1303 ELMER STREET
BELMONT, CA 94002

GROWING & GROWING

As many of you know, BAWA just keeps growing and growing this year! We have an additional new member joining us this month, bringing the total to 16 so far this year:

Name & City/Interests

Terry O'Donnell, Mountain View / Amateur: furniture, hand tools, Japanese joinery

BAWA MEMBER GETS PUBLICITY!

This month's issue of the WOODWORK Magazine contains an article by our President Mike Bray.

Mike designed and built a spiffy new mailbox for his house using some really nice lumber and a lot of hand work. "Its beauty, like the devil, is in the details: there are 14 main parts in maple, 26 tenons, 52 little wedges in kamerere (a mahogany-like wood) and 150 short pieces of bamboo, all in about 12 cubic foot of space!" You may recall seeing this at a couple previous "Show & Tell" sessions at BAWA meetings as Mike was developing the piece. Mike's article includes a dimensioned drawing and photographs of the assembly process. Congratulations Mike!

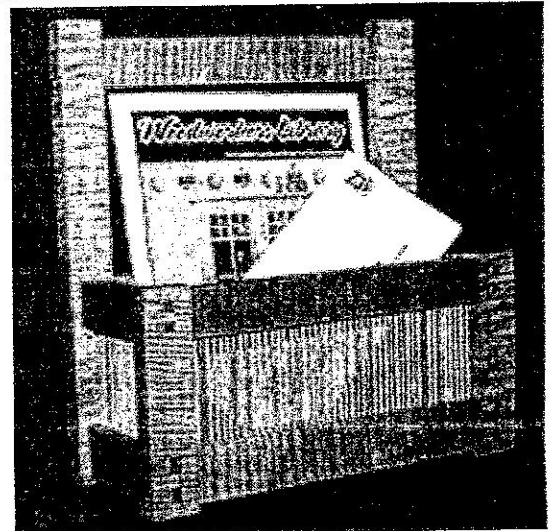
TELL US ABOUT YOU!

Some of you may at the last meeting may have heard Bill Henzel mention that he climbed a mountain:

Recently Outreach Co-Chair **Bill Henzel** climbed Mount Shasta - and we mean all the way to the top! Using crampons and ice axes he and a buddy made it to the summit. Everyone else turned back as the winds were at 80mph. They spent the night in a tent part way up the mountain the night before, but it wasn't fun as the wind "flattened the tent every 15 minutes." He says, "As we approached the summit you had to keep your head down as the wind came through in 3 minute cycles and would pelt you with ice particles." Congratulations Bill!

And, did you know,

BAWA member **Bill Small** recently started working as an apprentice at Jeffrey Hunt Woodworking in SF, the location of this month's meeting. We will no doubt see him there. Way to go, Bill!



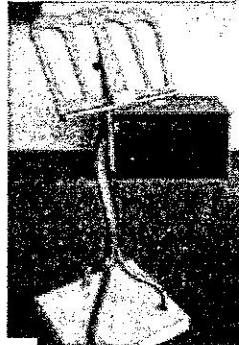
Sheltered from the weather on the porch of the author's Arts-and-Crafts house, this flashy mailbox awaits anything the mail carrier has to offer.

**Your ad
here!!!!**

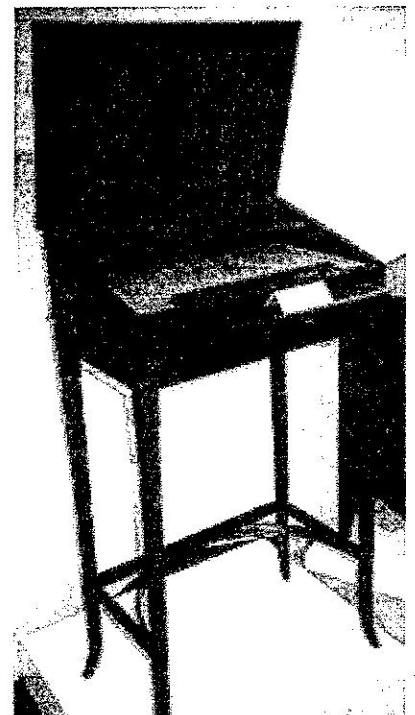
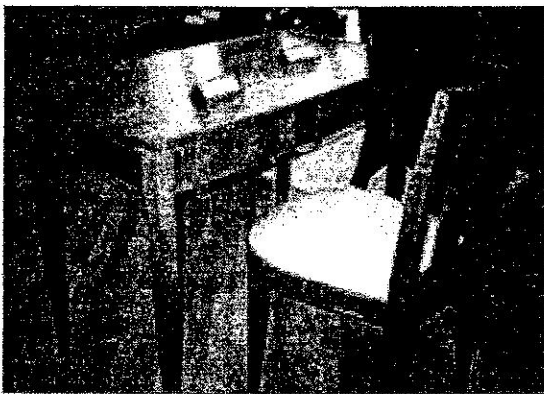
We're now selling ad spaces in this newsletter. For only \$100.00 per year (12 issues) you get a business card sized ad 3 1/2" wide by 2" high as shown above. (Call for a quote on larger add spaces.) Our newsletter goes to a very targeted audience of woodworkers who buy tools, supplies, lumber and materials, and who attend seminars and related events. If you're a supplier or service provider and want to reach this audience, all we need is "camera ready" copy. Call the editor at 408/926-1900.

IT'S SHOWTIME!

This could be subtitled: "What BAWA members did on their summer vacation" as a number of us drove to the North Coast to see the opening of the College of the Redwoods Student Show at Highlight Gallery in Mendocino, and an exhibition of work by members of The Mendocino Coast Furnituremakers Association at The Company Store in Fort Bragg. So many beautiful pieces, so little time:



Photos from the gala opening of the exhibition of student's work at College of the Redwoods at the Highlight Gallery in Mendocino. In addition to the student's work, which was dazdaling, this gallery had three floors of beautiful wood furniture and pieces by local craftspeople.



Photos of just a small amount of pieces by a variety of North Coast professional woodworker members of the Mendocino Coast Furniture Association exhibiting at The Company Store in Fort Bragg. There was also an exhibit of chairs by MCFA members at a gallery up the street.

from the Editor

WHAT DOES BAWA DO FOR YOU?

Recent presenters at BAWA meetings have included Sandor Nagyszalanczy, Brain Boggs, Tony Lydgate, *Berkeley Mills*, *DeWalt Tools*, Jaap Romijn, and Yeung Chan to name just a few. BAWA also has an extensive and growing video library, and is building a formidable book & periodicals library. We even have a *Tormek* Grinder for loan to members. As a member, you not only get access to all of this, you make some great woodworking friends who are always ready to help you with a word of encouragement or an acknowledgment of your success. If all of this is worthwhile to you, then sit down right now and fill out the form to the right to join or to renew. Then either bring it with your check to the next meeting and give it to the treasurer, or mail them to her at the address listed below.

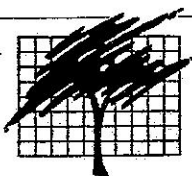
If you're a new member, welcome!

If you're renewing, thank you, and remember we still need the info, so fill out the form and send it in.

BAWA: Who We Are

The Bay Area Woodworkers Association was formed in 1982 by a small group of dedicated people who felt the need to strengthen the woodworking community by holding regular meetings, establishing an informal forum for the exchange of knowledge and ideas, sponsoring shows and meeting others in woodworking and related fields. Since then, this non-profit organization has grown to many members.

BAWA meets on the third Thursday of the month at 7:00 PM. Meetings usually have a specific topic, such as router techniques, finishing, turning, or business aspects of woodworking; or focus on a distinguished guest speaker who gives a presentation in his area of expertise. Meetings are held at woodworking shops and businesses in the Bay Area or at a permanent club meeting place (as soon as a new one is found



BAY AREA WOODWORKERS ASSOCIATION

Membership Application / Renewal

Name _____

Address _____

City _____ State _____ Zip +4 _____

Work Phone () _____

Home Phone () E-mail

Profession: _____

Speciality/Interests (List): _____

Skill Level: ☐ Professional ☐ Amateur ☐ Beginner
☐ Please don't circulate my name/address to other organizations.

I would be willing to volunteer for:

- ☐ Elected Officer
- ☐ Program Committee or Chairman
- ☐ Special Events Coordinator
- ☐ Organize Tours-Woodworkers' Shops
- ☐ Trade Show Staff
- ☐ Show and Exhibit Coordination
- ☐ Newsletter articles or Editor
- ☐ Publicity for BAWA in local Press
- ☐ Greeter for Guests/New Members
- ☐ Hospitality for Guest Speakers
- ☐ Meeting Set-Up/Clean-Up
- ☐ Making *Toys for Tots* projects
- ☐ Outreach and Community Projects
- ☐ Librarian for Video Library
- ☐ Handling AV Equipment
- ☐ Other _____
- Check as many as you want, but check at least one.*

BAWA Membership Dues

BAWA dues are currently \$25.00 for twelve months (family memberships are \$30.00). Your newsletter address label shows your renewal date.

Membership can begin during any month of the year. Make check payable

to **BAWA**. Bring it **AND THIS FORM** to the monthly meeting, or mail to:

BAWA TREASURER

Membership Application/Renewal

LAST MONTH'S PRESENTATION

by Craig Mineweaver

What is Architectural Forest Enterprises? The nature and type of work and products of A.F.E. is so varied and vast, it almost defies categorization. They travel the world buying lumber and veneers, which they sell to all the major milling houses, but also to small woodworkers. They specialize in buying and selling veneers wholesale, but they also manufacture production furniture and provide "outside furnishings services" to other mills and to designers. They sell wheat board and other "eco-sensitive" materials and wood products as well as veneers from certified or managed forests. They utilize computer-aided manufacturing (CAM) to assist with just-in-time (JIT) manufacturing processes. Because of their expertise using veneers and wood products to make wall coverings, trim and furniture, they often receive large commercial interior furnishings contracts for offices, corporate conference rooms and public spaces. Two examples are the recently completed interiors of the nationally acclaimed SF Public Library and their current work on the SF Airport expansion project. (Photo 1)

Peter Haan, of AFE began his talk in their show space where the walls are hung with 25 panels of different veneers. Since moving to this building in 1998 and they have developed the "the largest architectural-grade veneer inventory in the Western US." Peter surprised us by explaining how "what the veneer costs doesn't matter." This is because "veneer in the raw sells for 15 cents up to several dollars/sf. times a factor of 2 or 3 for waste, not including a cheap 'backer,' plus \$3.00/sf. or so to develop the face on your own core." In other words the budget is affected more by the "difficulty of fabrication," that is, how complicated it is, if it's pre-finished or not, etc. He said they outfit a lot of law offices for which AFE's products usually run about \$20 to \$40/sf. installed,

whereas a regular flat panel of laid-up veneer runs about \$1.85 to \$12/sf. before installation, so picking an exotic veneer doesn't add as much to the cost as the installation does.

Peter discussed and later showed us some examples of wheat board. This material is like particle board and is by nature a rather rough surface as it's made from wheat chaff rather than wood. It's held together with a non-formaldehyde glue so it doesn't "outgas." The material holds screws well, is easy to mill and is inexpensive.

Then it was on to the tour. We started in the veneer warehouse area (Photo 2) where we learned that a "flitch" is always from the same tree, and the larger ones that yield longer pieces are potentially more valuable. When Peter buys them, he must look through every sheet to determine blemishes, etc. Also he reviews the "sequencing" within the pallet of veneer to see how long a pattern runs. Since long runs increase the value. He also checks the type and amount of "figure," and the appropriateness of the color for a particular wood type. Flitches are graded and notes are made about these items as well as variations in thickness of the sheets and within a sheet and of how dry the wood is. Together all of these factors determine the cost of the raw veneer. Next we moved to the knife and saw machines. This department "develops the sequencing scheme" for the veneer panels, often working from the architect's or designer's drawings.

Then they cut the panels to size (Photo 3) with a knife or veneer saw. The panels move on to the splicing machine which edge glues the long strips of veneer together (Photo 4). Sometimes a seaming machine is used to put a glue-coated thread on the back in a zigzag pattern over the joint. A third assembly method is "taping" which isn't done anymore except in small or home shops.

Glue is then spread onto the core material and immediately the veneer is laid on top and pressed, either hot or cold (with pressure) to "lay-up" the veneer panel. The inexpensive backer material is put on the backside of the panel during this operation to help prevent warping. At AFE, the assembly of veneer, core and backer takes place in a continuous operation on one machine (Photo 5). Next the veneered panel moves to a very wide belt sander. Then it's off to the CNC Router machine (Photo 6) where the panel is cut to exact shape and size. The next large open area contained numerous sawhorses and hundreds of bar clamps where the veneered panels are glued together to form furniture or large sections of wall panels, etc. according to the drawings.

Finally, the most interesting assembly line was a whole new group of automatic machines connected on a continuous conveyor that allows AFE to sand, stain, dry, then seal with "UV curing acrylic" (as on Pergo flooring material), then finish (both sides), and stack—all without touching the

(continued on page 7)

HAFELE
Hardware Technology

For the Finest
Selection of Cabinet
Hardware, Furniture Hardware
and Decorative Handles

visit our showroom at the San Francisco Design Center

Häfele America Co.
151 Vermont Street, Suite 9
San Francisco, CA 94103
Phone: (415) 241-9176
Fax: (415) 241-9824
Bring in this ad for a 10% discount when you visit.



panels. (See Photos 7 and 8.)

At the end of the assembly line, Peter showed us some examples of the kind of furniture they produce – currently some ultra-modern, inexpensive tables, desks, etc, for the offices of a local high-tech using primarily wheat board sheets with various veneers and painted finishes.

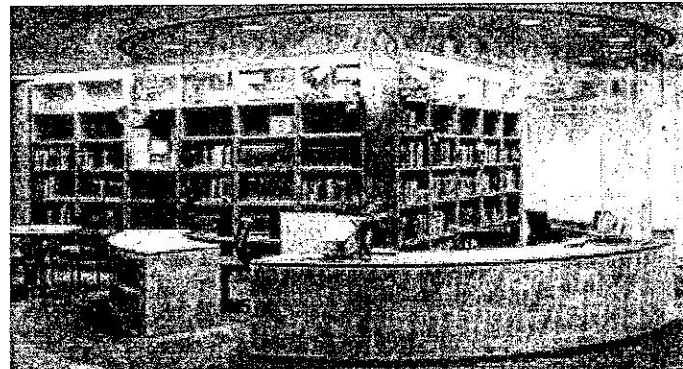
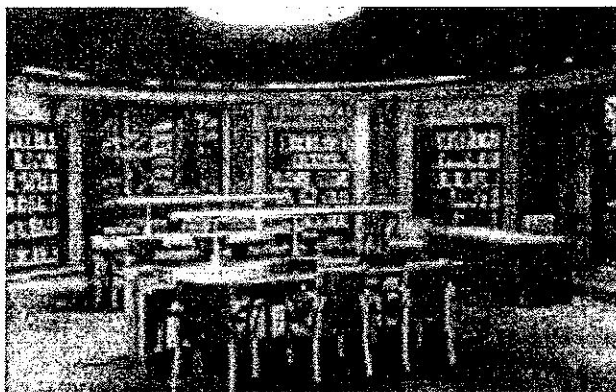
The large scale, high volume work of

AFE provides a strong contrast to the average home or small professional's shop. Yet the operations are similar operations to what we do to veneer and construct furniture pieces. The difference is they are automated and work on a much larger scale.

At the conclusion of our tour we had the opportunity to purchase material in the veneer area at fantastically

reduced prices. Many went home inspired to do some new design with some exciting new veneer. Thanks, Peter, for a fascinating tour! You can visit AFE on the web at www.ecoforest.com. Their showroom/factory/warehouse is at 3775 Bayshore Blvd., Brisbane, 94005 (415/467-4800).

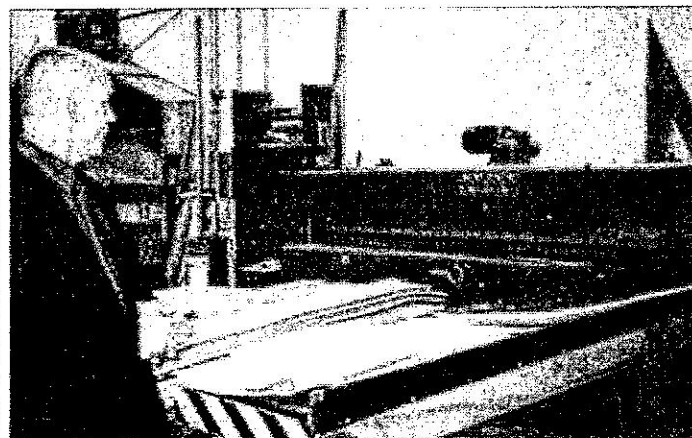
(Photos continue on page 8)



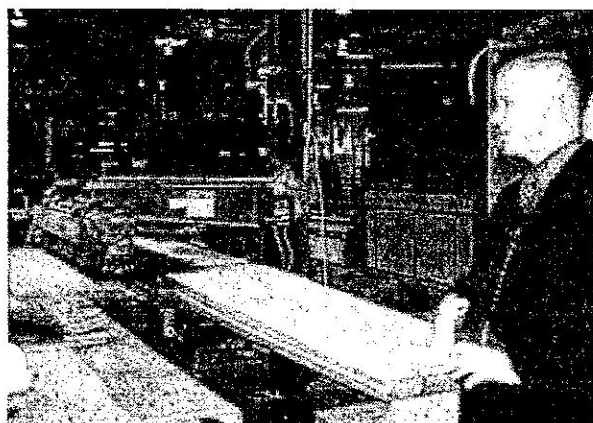
Some of AFE's work at the new SF Public Library. On left is figured Sycamore, and Maple, Quartersawn Chery and Lacewood panels and on right is figured Sycamore veneer and lumber. Photos 1 and 2



This is just part of the thousands of sf. of veneers Photo 3.



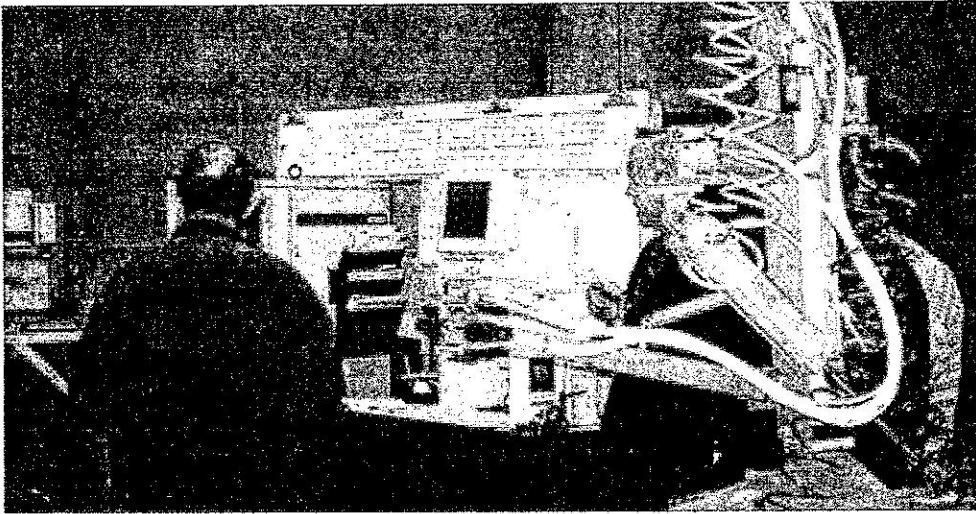
Peter is explaining how the sawing is done. Note designers drawing at near corner of table. Photo 4.



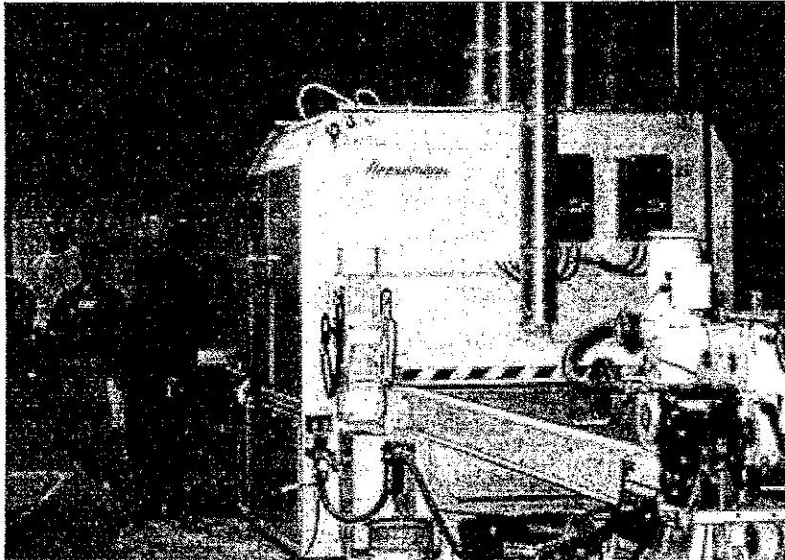
Strips of veneer are put together with the splicing machine. Photo 5.



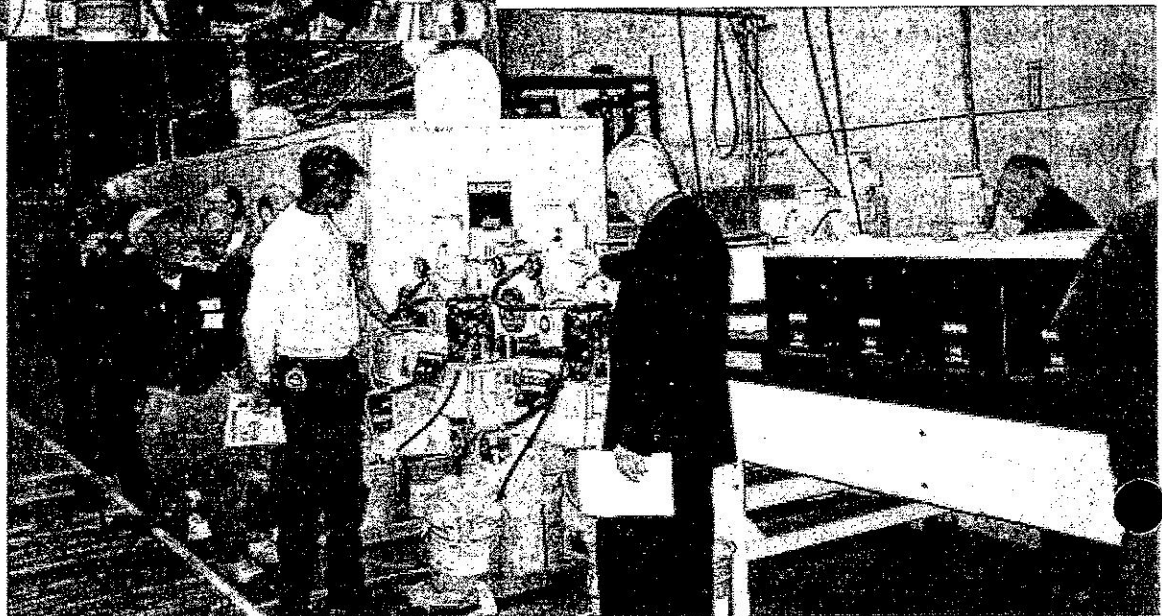
The machine for assembling and pressing the panel is on the left and the sanding machine on the right. Photo 6.



Here the computer controlled router cuts and shapes the panel to size. Photo 7.



Photos 8 & 9: This bad boy is really a series of machines connected via a long conveyor. The entire operation of sanding, staining, sealing and drying the veneered panels takes place all without touching the material.



FINE WOODWORKING WEST

A New Gallery Opening Soon

Fine Woodworking West, a cooperative woodworking gallery now being formed, invites Bay Area woodworkers to apply for membership in the co-op.

Woodworkers not wanting to be a member, but wanting to sell work on a commission basis are also invited to submit individual pieces for sale through the co-op gallery.

Member applications and individual pieces will be juried by local woodworkers Debey Zito, Yeung Chan, Brian Condran, Jeff Dale and Jim Sweeney.

Send resume and color slides (limit 10) of a minimum of 4 pieces of your woodworking to:

Dave Tucker, 172 Forest Side, San Francisco, CA 94127

Deadline for applications

June 1, 1999

Questions? Call Dave evenings (7-9 pm) at 415/681-3007

2x4 CONTEST UPDATE

In response to several questions oft repeated, here are the latest details of how the contest will run.

Since the 2x4s were not distributed at the last meeting, those who signed up for the contest will be allowed to buy a 2 x 4 x 8 at their favorite local lumber yard at a cost of up to \$10.00 maximum. The wood must be kiln-dried Douglas Fir, clear if possible. This must be the only wood used for the entry.

Special consideration will be granted to entries made entirely from this wood. (Fasteners and necessary hardware are ok.) Wood shall constitute at least 75% of the entry. For example, a wooden table with a non-wood top is acceptable, if the top does not exceed 25% of the material used. A cabinet using supplied wood over other material would not be accepted.

The contest will be held at the regular BAWA meeting in July. All members in good standing and who are present may cast one vote. Voting will be done by written ballot. Prizes will be awarded for 1st, 2nd and 3rd place.

(Note: Remember to also bring your entry to the Multi-club picnic August 7th for another chance to win a prize. Entries from all clubs will be judged together there as all to follow these rules.)

Downing Sawmills & Lumber PUBLIC AUCTION

Sunday, June 27, 1999

Preview & Tour 9:00 am

Sale begins 11:00am

at the mill at

300 N. Water Street, Petaluma

For info: 415/663-1641

Take HWY 101 to Washington St., Go west on Washington. N. Water St. is one block before Peteluma Blvd. Turn right.

One day only. All sales final. \$100.00 cash refundable deposit. Cash or cashiers checks only. Pick-up is June 28.

Dave Downing who's been a pioneer in milling salvaged and reclaimed wood for the past 20 years is liquidating a unique collection of over 20 species of locally acquired hard and softwood. This includes over 25,000 bd. ft. of high quality, locally milled lumber featuring over 60 wide table tops (24 - 50" wide), furniture and one-of-a-kind pieces, and T&G flooring.



888/712-3594

or

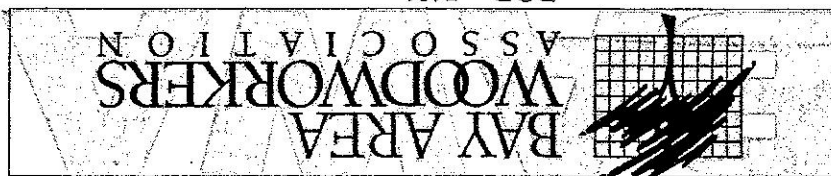
209/931-3293

2701-A North Alpine Road, Stockton, California 95205

Mail: 1814 McClellan Way, Stockton, California 95207

**Keep the fun happening -
join or renew today!**
Check your mailing label right
next to this notice. See the date
above your name? That's the
date for you to renew your
membership in BAWA. Fill out
the renewal form inside and
bring or send it with your dues.
If you haven't joined yet there's
no date on the label and it
means that you must join now
as **THIS IS YOUR LAST
NEWSLETTER!**

PO Box 5481
San Mateo, CA 94402-5481



LAST MEETING

(continued from page 1)

horses and President Mike Bray brought free wood for anyone interested in making toys for our Toys-for-Tots program.

Outreach co-chair Bill Henzel said to sign up for the next toy making workshop will be at his shop (See p. 2), and co-chair Allen Harrison announced that more volunteers needed for help at the Montessori Children's House (See end of story this page).

Program Chair Arnold Champagne said BAWA is seeking meeting sites for Sept/Oct/Nov. See Arnie if any ideas.

SHOW & TELL

Member Bill Miller displayed a child's rocker, one of several he's made for his grandkids. Instead of fasteners in the end grain, the seat is held to the sides with heavy through tenons with a peg on the outside to allow for retightening if needed. The

back is tipped at a 105 degree angle from the seat. The runners are attached to the legs with mortise and tenon joints, and he added a small ball shape at the front of each runner to keep the rocker from tipping over when going forward. This is a very sturdy chair that any child would love to have.



Member Bill Miller displays a child's rocking chair he made.

HEY - Wanna Be A Star?

Outreach co-chair Allen Harrison announces that because SF Mayor Willie Brown was so impressed with what he saw when he visited the Audrey Smith Children Center while our celebrated BAWA members were helping (See story in last month's issue.), the Mayor is requesting that our club do more volunteer work for the Montessori Children's House of the West Coast at 25 Lake Street in SF.

They have a budget of \$2,000 for materials to build 2 coat racks, 11 book cases and 4 wheeled partitions before school opens this September.

Please help BAWA and these kids, shine!! Call Allen 650/873-4831 or Bill Henzel 650/349-4831 and volunteer - who knows, you could end up on TV for BAWA again!