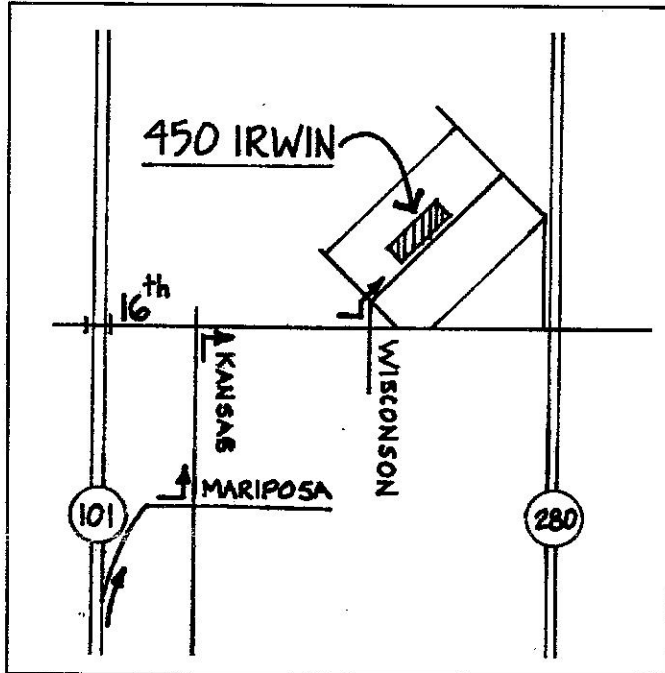


# BAY AREA WOODWORKERS ASSOCIATION

MEETING ANNOUNCEMENTS NOVEMBER 1998

November 19 Meeting 3rd Thursday REFRESHMENTS 7:00PM MEETING STARTS 7:30PM



## CALIFORNIA COLLEGE OF ARTS & CRAFTS (CCAC)

**450 Irwin (Big gray building at 16th & Wisconsin), San Francisco 415/703-9523**

How many of you have wanted to get started learning how to turn wood on a lathe? You know just reading about it won't help. You need to actually experience it. Well, now you can! Some of our members will demonstrate proper turning techniques at this month's meeting at **CCAC**. You'll also get to see **CCAC's** great new facilities, but please don't disturb any classes going on - it's a busy place in the evening. Parking is on the street, with all the other students. The entry is at the middle of the Irwin Street side. We will meet upstairs at the far right end in the Wood Shop.

## OFFICERS

President ..... Mike Bray ..... 510/595-8168  
 Vice Pres. .... Frank Hungler ..... 650/343-9559  
 Secretary ..... Tony Fanning ..... 650/323-1183  
 Treasurer ..... Linda Salter ..... 650/365-4093  
 Newsletter ..... Craig Mineweaser .. 408/926-1900

## COMMITTEE CHAIRPERSONS

Program ..... Stan Booker ..... 510/522-7879  
 Hospitality ..... Gene Wagg ..... 510/527-5805  
 ..... and ..... Don Wagg ..... 510/769-8901  
 Membership .. Pending .....  
 Shows ..... Pending .....  
 Outreach ..... Arnie Champagne . 415/282-1704  
 Librarian ..... Rodney Finlay ..... 650/747-0657

For any questions or information about BAWA programs, contact Stan Booker (evenings).

## LAST MEETING

*by The Editor*

Our October meeting was held at the hardwood lumber supply dealer, **Jordan International**. There was no formal presentation. Instead, after our regular business meeting, and a lively "show and tell" session, members were free to browse through the warehouse and make lumber purchases at a discount. Owner **Paul Jordan** announced that he would extend the discount to our members through tomorrow. During our business meeting, the following occurred: New member **Kieth Rahder** said he learned of **BAWA** from the

*(continued on page 8)*

## Upcoming 1998/9 BAWA Meetings

Dec. 17 - Annual Potluck at Amer. Legion Post #82 in San Mateo

Jan. 21 - T. B. A.

Feb. 18 - T. B. A.

## MEMBER FAVORITES

Have you got a favorite place for buying tools, lumber, supplies, etc.? Let the editor know so it can appear in this list.

### Hand Tools

Carl Johnson's Pick:

**Robert Larson Company, S. San Francisco, a great place for quality hand tools. 415/821-1021.**

### Used Tool Source

Carl Johnson's Pick:

**Garage Sales Listed in Your Local Paper, They're tucked away in attics, garages and elsewhere all over the Bay area. Be the first caller in the morning and go deal for a really good price.**

(Note: This is not an endorsement by BAWA. It is the sole opinion of the member(s) listed.)

Soon we would like to collect these "picks" and publish them as part of a list to give to members when they first join or re-new. So call or send additional ones to the editor! (See form on page 5.)

## SEND IT IN

Have something you want published in this newsletter? Tell our members about Ideas for future meetings, photographs, announcements, exhibits, shows or events. Or let the editor know if a mistake has been made.

Send to:

**BAWA Newsletter Editor**  
3251 Almansa Court  
San Jose, CA 95127-1001

or

408/926-1900 voice  
408/926-7078 fax  
[researchem@msn.com](mailto:researchem@msn.com) e-mail

**Next issue DEADLINE:**  
**November 30, 1998**

## MEET BAWA MEMBER: Carl Johnson

by Craig Mineweaser

*This article is part of a series of interviews with BAWA members. This month I visited the shop of long-time member Carl Johnson. I learned some great ideas for shop organization and .... that it all started out with a sail boat. Thanks Carl!*

Back in 1939 two brothers age 13 and 15, were in the attic of their home in the Bronx. They had a dream of building the best wooden boat ever, and the plans for it had just arrived in the mail. This was no little rowboat, but a full 28' sailboat and they were excitedly laying out the pieces of it to full scale on the floor of the attic.

Well, they had to wait a few years to complete this dream. World War II was the first interruption, which saw Carl in the Army Air Corp for the final ten months of the war in 1945. Then he was off to the New York State Maritime College where he got a degree in Mechanical Engineering, in steam propulsion. Then he sailed in the Merchant Marine for 6 years rising to the rank of Chief Engineer. Eventually Carl tired of standing watch in shifts, so he took an I.C.S. correspondence course in air conditioning, then worked for two years in Syracuse, New York, for the Carrier Corporation, an air conditioning equipment manufacturer.

By 1958 Carl was living in the Glendale area of Southern California running the service department of an air conditioning contractor called ACCO. In 1964 he was promoted to company manager. While in the L.A. area, he took additional classes at USC and UCLA and, of course, worked in his wood shop in the garage.

In 1979, Carl recently divorced, moved to the San Mateo area to run ACCO's Northern California operation. He stayed with them until he retired, a total of 35 years in the air conditioning business. Meanwhile, his interest in woodworking grew. Since retiring he has taken a number of woodworking courses around the country. He took Michael Dunbar's chair making course in York, Pennsylvania, and made a "sackback" Windsor chair. He took a bowl-turning class at Wood Craft supply in Utah. Four years ago he took Brian Boggs' chair making class for a week in Brea, Kentucky (see photo 2.) And with some of the other accomplished woodworkers in BAWA, he went to the College of the Redwoods at Fort Bragg to study under James Krenov. There he took the three-week Tools & Techniques class which teaches basic hand tool technique, plane making, etc. Then he took Krenov's Project Class for which you design a piece on paper and send the drawing ahead for approval before the class starts. For this one, Carl decided to save even more time by making the mock-up of his class project, an end table, ahead of time, so he could show it upon his arrival. He cut the mock-up from Styrofoam and it saved him enough time that he was able to make two end tables in the four-week class. These fit in the niche on either side of his sofa, just the way he had planned they would (see photo 3).

A while back, John Kassay, who was head of the S.F. State University's Wood Technology Department gave Carl plans for a grand Windsor chair. Made from cherry wood, Carl considers this his best piece of work so far and proudly displays it in his living room (see photo 1).

Carl has also built numerous pieces of furniture etc. for other people, starting with many bookcases for the offices of ACCO. He has made 17 cigar humidors, a rocking chair, more bookcases and several commissioned pieces for friends, relatives and former employees. Carl says his favorite woods are cherry, maple and walnut, and he can discuss at length the pros and cons of the various types of oak he has worked with. Carl likes to finish most of his pieces with one coat of shellac and two or more of lacquer, or sometimes just all shellac.

Carl now has four grown kids: one daughter in Alamo, CA, another in Reno,

(continued on page 3)

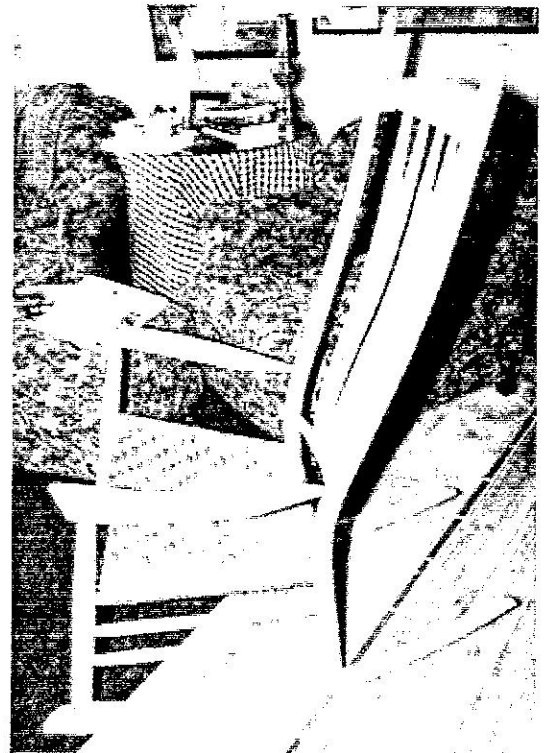
## MEET BAWA MEMBER: Carl Johnson

(con't. from p. 2)



Carl considers this his best piece, a Windsor chair of finely crafted cherry, which took many, many hours to make.

**Photo 1**



With some other BAWA members, Carl cut and steam bent some of the pieces to this rocker locally, then they all went to M. Dunbar's course where he finished it. It's made of oak with a hickory seat. **Photo 2**



Carl looks proudly on the kitchen cabinetry he built - it only looks free standing. He also turned the bowls on the counter.

**Photo 4**



Carl designed and built a pair of cherry end tables at College of the Redwoods. He also made the cherry band boxes displayed on top. **Photo 3**

(continued on page 4)  
page3

## MEET BAWA MEMBER: Carl Johnson

(con't. from p. 3)

NV; one son who is a sales rep for MacMurray Pacific, a cabinet hardware supply company in San Francisco, and another in Mindon, NV who's a building contractor. So now Carl gets to make things for the grandchildren too.

His favorite tool is the draw knife or spokeshave, because it gives an immediate connection to the working of the wood. You can really feel the wood as you shape it – a kind of sculptural approach to furniture making.

Many of us know that chairs are the most difficult furniture to make, but not for Carl. He showed me a template he'd created to make 7 identical Windsor chairs (see photo 5.) After shaping and sculpting the template the exact way he wanted and it was comfortable to sit on, he drilled a series of holes through it on a grid pattern. Then Carl set the template on top of each successive seat piece and drilled through it until the drill stopped at the top surface of the template. Because the top of the template had already been shaped, this resulted in holes of varied depth that reproduced the shape of the template's surface. It was then a simple matter to scoop out the new seat to the depth of the holes, resulting in the duplication of the sculpted surface of the template. A neat trick and very typical of the practical, efficient way Carl approaches his woodworking.

Carl likes to expand his skills by learning new techniques. After building a ladder-back side chair of oak, he "fumed" it before adding a clear finish. He put the pieces inside a tent he built in his garage, and used ammonia to produce fumes. Trapped inside the tent, the fumes quickly darkened the wood, giving it that special look just like much of the original Arts and Crafts style furniture had.

A few years ago, Carl's wife Laura wanted a new kitchen as part of their remodel and addition project. At her instruction, her brother, who is an architect, designed the cabinets to be more like furniture, and indeed they are. Carl and the architect's son

(Laura's nephew) built them of rippling ash, with a blue stain finish (see photo 4). One piece divides the family room from the kitchen with an entertainment center in one side and on the kitchen side, deep drawers for pots and pans with an "appliance garage" on the counter above. The piece dividing the kitchen from the dining room has a glass-front china cabinet on the dining room side with a built-in range top and pop-up exhaust hood set in a blue and white ceramic tile counter top with matching three foot high tile backsplash. These really do look like freestanding furniture.

Carl's shop takes up the entire two-stall garage – in fact it's crammed full of jigs and lumber hung from the ceiling and stacked on the side wall plus equipment, benches and a number of projects in progress. Carl says, "I get most of my tools at garage sales. I don't waste time on just any sale. I only go to the ones advertising 'tools.'" And it shows. He's gotten some great deals. He has all the basic tools: Delta Unisaw, lathe (see photo 6) and bandsaw, Makita planer/jointer, DeWalt scroll saw and 12" sliding miter saw, plus a Rogers horizontal boring machine. "I received the sliding miter saw free from Delta and it's truly a beautiful machine." (Carl regaled us with the story of obtaining this saw at our July BAWA meeting), but... "the bandsaw is really an indispensable tool."

He's even tucked a small air compressor into the far corner with a retractable air hose mounted on a reel in the center of the ceiling. On one long wall is an industrial-strength, adjustable, open shelf system that is a heavy duty metal framing system used in industry to support pipes, ducts, etc. The best known manufacturer of this system is "Unistrut" and in addition to being super strong for its size, it all bolts together such that it can easily be reconfigured. He's engineered every detail.

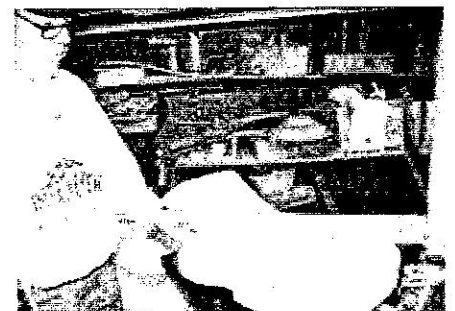
On the opposite long wall is a set of

custom kitchen cabinets obtained from a nearby bank that was closing. Carl modified the insides with custom roll-out shelving and supports for tools (see photo 7.) He added a bench top that supports several sharpening and grinding tools and his new scroll saw. He engineered each workstation in the shop to be superefficient with the necessary hand tools and jigs stored within arm's reach.

Offset from the center of the room is his long tool bench. "I built this from plans in issue #16 of *Fine Woodworking Magazine* and it's very sturdy." Above each work station he has lots of light and a variety of hanging tools, jigs, clamps, etc. (see photo 8.) One of his portable shop vacuums is rigged so it can be quickly connected to the planer or the table saw, or moved to other tool locations when needed. Carl says, "Shops that are too clean (with no sawdust on the floor) equal no work (being done.) I really would like a dust collection system but I don't really have the room yet." He says he'll have to work out how he could fit one in.

Carl never sits still – many of you know him as an active contributor to BAWA. What you may not know is that Carl is also President of the Peninsula Woodworkers Association and is active in the West Bay Area Woodturners.

So, did Carl and his brother ever finish their 28' sailboat? Well you'll have to ask him, but a hint is that Carl lives right on the water in Foster City.



Carl shaped this template, then drilled holes in a grid pattern through it to shape 7 identical Windsor chair seats.  
**Photo 1**

(continued on page 5)



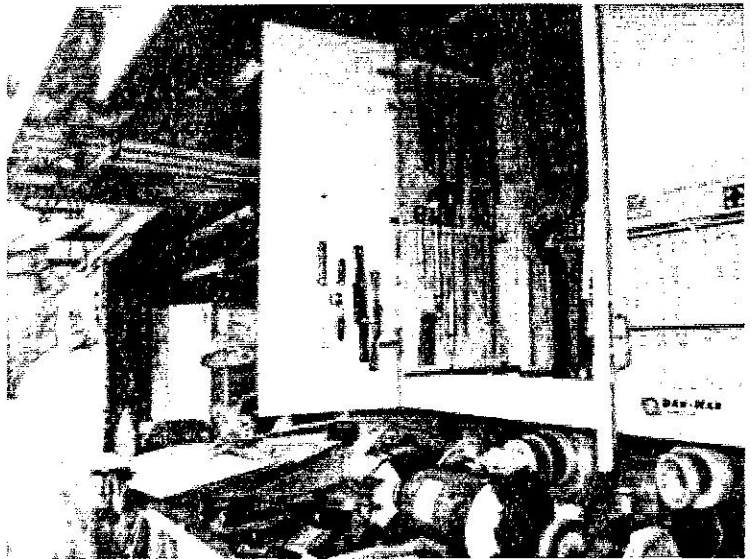
## MEET BAWA MEMBER: Carl Johnson

(con't. from p. 4)



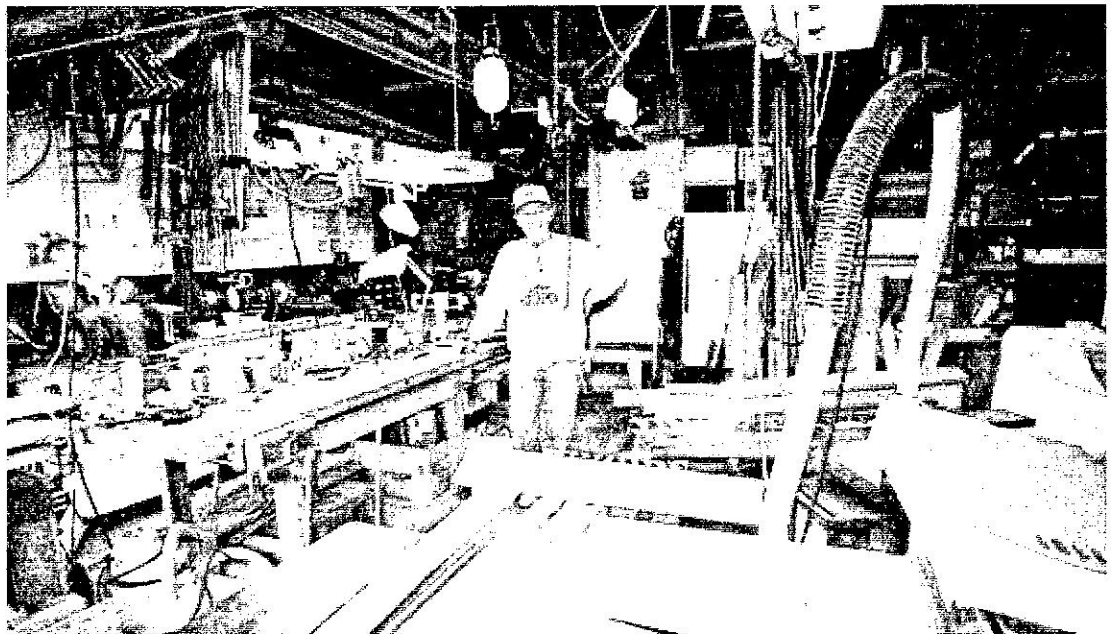
The turning station. Note the light above is surrounded with storage and the lathe tools are neatly arranged on the wall behind.

**Photo 6**



Carl customized a set of kitchen cabinets with roll-out tool racks. The sharpening station is on the counter below.

**Photo 7**



The happy woodworker, Carl, standing beside the workbench he made for operation central, his garage shop. The shop may look "busy" but every tool and jig has a thoughtfully arranged home. In the foreground on top of the table saw is a shadow box project that just came in.

**Photo 8**

## FOR SALE

Members, if you've got a woodworking tool for sale, place your ad here. You know your item will go to a good home!

*Wanted: Back issues of Fine Woodworking Magazine.* Need issue no's. 8, 11 through 15, 17, 18 & 19. Call 650/341-6210.

*Black Velvet Gift Boxes* for pens or pencils. Supplied with a plastic liner to hold the pen, but look fantastic if you add your own liner. Quantity deals. 650/349-4156.

*Delta 15" Scroll Saw.* 1/10 hp, 1.6 amp motor. Seldom used. \$80.00. Call 510/595-8168.

*Hitachi P10F, 12" Thickness Planer* with extra knives, bargain priced at \$500.00. 415/861-2453.

*Plunge Router Base for Porter-Cable Router.* Brand new. Fits model 690 fixed-base router, & will turn it into a plunge router - or change back and forth. \$70.00/obo. 510/522-7879.

*Tubular Lathe, 36"-48" center-to-center, 3/4 hp, 3/4" drive.* Best offer. *Woodworking Calculator, Construction Master IV Brand,* \$40.00 (sells for \$80 new.) Also an assortment of hand tools. 415/282-1704.

## FOR RENT

Rent your very own

### **TORMEK SHARPENING SYSTEM!**

Remember as club members, you are eligible to rent our **Tormek Sharpening System** for a week! Several months ago the club purchased this unit complete with many different attachments. Using this set up, think of all the tools in your shop you can sharpen in that time. You can give a fine professional edge to your plane irons, jointer knives, shop and household knives, etc. So call *Stu Hoffer*, 650/946-3451 or e-mail him at *stu@querylabs.com*, to reserve a week of this machine for your very own. Your woodwork will instantly improve!

page 6

## LAST MEETING

*Show and Tell:* Member **Frank Sainsbury** asked if any members had tried using a stack of saw blades in lieu of a dado blade to make dado cuts on the table saw. A lively debate ensued in which the pros and cons were discussed. It was pointed out that the "cutting angle" of a saw blade is deeper than that of a dado blade, so the chance of kickback is much greater, particularly if using multiple blades. Also, because it is larger, the cutting edge of a 10" saw blade runs at a higher speed than that of a dado blade, which is usually about 8" diameter. It was finally agreed by all that this would be a dangerous operation to attempt.

Past President **Al Semenero** showed a nifty jig he made for cutting laminates on the table saw. He showed how easy and safe it is to push his jig through the saw, rather than pushing on the laminate piece. It even has a little splitter to prevent the saw kerf from closing and pinching after the laminate passes the blade. Talk to him about the details.

Member **Carl Johnson** showed a box he built for a company that wanted to display sample tea bags. Similar to a humidior, it has an insert to hold samples of each type of tea. He covered this insert with "flocking" using a "Suede-Tex" kit he bought from

## EDUCATION CORNER

Outreach Chair **Arnie Champagne** has also announced two classes to be given at his shop in San Francisco. He will be giving two week-end 'intensives.' The first is titled **MARQUETRY** and the second is **MAKING A WOODEN PLANE**. Both are two full-day classes. At the end of each you leave with a usable piece or plane you have just constructed, and a lot of knowledge from Arnie about how to continue to do your own. These are planned for January '99 with a class size of about 6 each. If you've ever wanted to learn either or both of these skills, start now by giving Arnie a call 415/282-1704 for details on date, fee, what will be provided, etc.

(continued from page 8)

*Woodworkers Supply.* He said you must first seal the wood with shellac (double coat the ends of the plywood), then coat the surface with the supplied adhesive, then spray on the flocking material using the sprayer supplied with the kit. To spray evenly, this applicator often has to be modified by adding a couple more small holes at the end.

Member **Bill Henzel** showed a beautiful rocker of walnut, designed in a style similar to *Sam Maloof's* work, but with Bill's own details. He discussed how, because of the angle of the legs as they are tightened down onto the dowels that connect them to the rockers, they must be driven very hard.

Member **Yeung Chan** showed another one of his exquisite chairs in cherry. Based on traditional Chinese joinery, this one has all round legs. But on this chair, Yeung provided a raised, radiused edge on the back splat and carved a medallion in the middle of this splat - nice touch. He finished the chair with three coats of shellac.

President **Mike Bray** displayed his finished mailbox. We last saw this at the July meeting when it was still in process. Made from the beautiful curly maple available from Canadian sawyer, *Bob Printz*, the mailbox is a unique design incorporating supermarket bamboo skewers to form see-through side panels like a room-dividing screen.

## PARTY, PARTY, PARTY

### TOY MAKING PARTY

December 11, 12 and 13

**Arnie Champagne's Shop**

A great way to have fun as a group while creating toys for the Christmas Toys-for-Tots program.

*Field Trip to a local furniture shop is planned*

New members are especially welcomed. Call Arnie at 415/282-1704 for details, directions and to discuss what toy pattern you want to make.

## Membership?

from the Editor

## WHAT DOES BAWA DO FOR YOU?

Recent presenters at BAWA meetings have included Sandor Nagyszalanczy, Brain Boggs, Tony Lydgate, Berkeley Mills, DeWalt Tools, Jaap Romijn, and Yeung Chan to name just a few.

BAWA also has an extensive and growing video library, and is building a formidable book & periodicals library. We even have a Tormek Grinder for loan to members. As a member, you not only get access to all of this, you make some great woodworking friends who are always ready to help you with a word of encouragement or an acknowledgment of your success. If all of this is worthwhile to you, then sit down right now and fill out the form to the right to join or to renew. Then either bring it with your check to the next meeting and give it to the treasurer, or mail them to her at the address listed below.

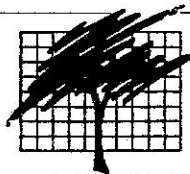
If you're a new member, welcome!

If you're renewing, thank you, and remember we still need the info, so fill out the form and send it in.

### BAWA: Who We Are

The Bay Area Woodworkers Association was formed in 1982 by a small group of dedicated people who felt the need to strengthen the woodworking community by holding regular meetings, establishing an informal forum for the exchange of knowledge and ideas, sponsoring shows and meeting others in woodworking and related fields. Since then, this non-profit organization has grown to many members.

BAWA meets on the third Thursday of the month at 7:00 PM. Meetings usually have a specific topic, such as router techniques, finishing, turning, or business aspects of woodworking; or focus on a distinguished guest speaker who gives a presentation in his area of expertise. Meetings are held at woodworking shops and businesses in the Bay Area or at a permanent club meeting place (as soon as a new one is found - See notice on page 8.)



**BAY AREA  
WOODWORKERS  
ASSOCIATION**

## Membership Application / Renewal

Name \_\_\_\_\_

Address \_\_\_\_\_

City \_\_\_\_\_ State \_\_\_\_\_ Zip +4 \_\_\_\_\_

Work Phone ( ) \_\_\_\_\_

Home Phone ( ) \_\_\_\_\_

Profession: \_\_\_\_\_

Speciality/Interests (List): \_\_\_\_\_

Skill Level: ☐ Professional ☐ Amateur ☐ Beginner

☐ Please don't circulate my name/address to other organizations.

### I would be willing to volunteer for:

- |  |  |
|--|--|
| <input type="checkbox"/> Elected Officer                   | <input type="checkbox"/> Greeter for Guests/New Members  |
| <input type="checkbox"/> Program Committee or Chairman     | <input type="checkbox"/> Hospitality for Guest Speakers  |
| <input type="checkbox"/> Nominating/ Election Committee    | <input type="checkbox"/> Meeting Set-Up/Clean-Up         |
| <input type="checkbox"/> Special Events Coordinator        | <input type="checkbox"/> Making Toys for Tots projects   |
| <input type="checkbox"/> Organize Tours-Woodworkers' Shops | <input type="checkbox"/> Outreach and Community Projects |
| <input type="checkbox"/> Trade Show Staff                  | <input type="checkbox"/> Librarian for Video Library     |
| <input type="checkbox"/> Show and Exhibit Coordination     | <input type="checkbox"/> Handling AV Equipment           |
| <input type="checkbox"/> Newsletter articles or Editor     | <input type="checkbox"/> Other                           |
| <input type="checkbox"/> Publicity for BAWA in Local Press |  |

Check as many as you want, but check at least one.

### BAWA Membership Dues

BAWA dues are currently \$25.00 per year (family memberships are \$30.00 per year) payable by December for the following year.

Membership can begin during any month of the year. Make check payable to BAWA. Bring it AND THIS FORM to the monthly meeting, or mail to:

BAWA TREASURER  
2527 1/2 Graceland Avenue  
San Carlos, CA 94070

## Membership Application/Renewal

Our Secretary **Tony Fanning** deserves a big "Thank You!" next time you see him. In addition to other duties, he has contributed articles and how-to-do-it assistance to the newsletter editor throughout this year.

Also say "Thanks" to V.P. **Frank Hungler**. Although not able to attend as many monthly meetings as before, he retrieves the mail from our post box and supplies shelving, etc. for our booth at the annual show.

And "Thanks" definitely go to **Gene and Don Wagg** for tirelessly lugging all the refreshments to every meeting. Just think of what it would be like if they didn't do this!

**BAWA** is a great club because of the efforts of these hardworking volunteers. THANKS TO YOU ALL!

San Mateo, CA 94402-5481  
PO Box 5481

**BAY AREA  
WOODWORKERS  
ASSOCIATION**



## LAST MEETING

Northern California Woodworking Show. Guests present were **Robert Hartman**, **Devin Thamer** who said he does custom cabinetry and trim and **Lance Osborn** who does boxes. Program Chair **Stan Booker** suggested that future meeting topics might include a presentation by **Tony Lydgate**, or a box maker. The location of our November meeting is still to be determined.

President **Mike Bray** announced that he had just started a new job as an apprentice at **Wilson & Sons**, a local custom cabinet shop. Treasurer **Linda Salter** reported that we have \$826.01 in our account. Librarian **Rodney Finlay** said that more new video's have arrived for our library. Outreach Chair **Arnie Champagne** again announced a toy making workshop would be held at Arnie's shop on Dec. 11, 12 & 13 (See 'Party, Party, Party' on page 7.) He will need information from attendees ahead

of time so he can pre-cut items. Attendees who don't have a drawing of the toy can make one ahead of time, but don't glue it as it will be used as a template to duplicate. He said those who can't attend or the December BAWA meeting, but are making toys to donate should call Arnie or Al Semenaro in late November or early December to arrange drop-off.

The wood sale at *Into the Woods* on October 24<sup>th</sup> was announced. Our participation in the *Northern California Woodworking Show* was discussed, and Mike passed around the sign up sheets for working at our booth and for bringing pieces to show in the booth. Mike also has copies of the October issue, #53, of *Woodwork* magazine, which features member **Yeung Chan** on the cover and in an article on Chinese furniture joinery. He is selling them for \$5.00 as this is now a "back issue," and is no longer available on

(continued from page 1)

the newsstand. A number of members bought a copy at the meeting, but he still has a few available - call him at 510/595-8168. Arnie also announced the **Marquetry and Plane Making** classes he will be holding at his shop in January (see "Education Corner" on page 5.) Call Arnie at 415/282-1704 for further details.

(continued inside on page 6)

**Yes, officially we're still homeless.** Having lost our regular meeting place, we are meeting at various stores and workshops for a while, but we need to return to a semipermanent home for our meetings. We've had a good response from all of you suggesting a possible place, but nothing is firm yet. So, if you know of a meeting hall for 35-45 people, preferably be a West-Bay town, and be for free or very little money, please call **Mike Bray**, 510/595-8168.