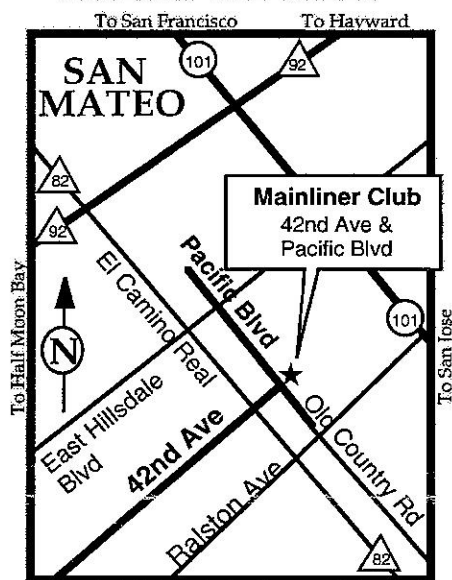


BAY AREA WOODWORKERS ASSOCIATION

MEETING ANNOUNCEMENTS

May 1997

May 15, 1997 WHERE WE MEET



**Get there
early!**

**Come at
6PM to
help set
up.**

**No later
than 6:45
for a good
seat!**

May 15 Meeting Open to Public

7:00PM — 10:00PM AT MAINLINER CLUB, SAN MATEO

John D. Alexander Jr. will present a 3-hour workshop on how to "Make a Chair from a Tree." Mr. Alexander is a lifelong student of the traditional woodworking technology of stick-chair making and joinery. He has been making chairs for over 30 years.

He bases his work on the fact that green wood is easier to work than dried wood. And if you know how to use it, as green wood shrinks, it holds the parts of the chair together better. Mr. Alexander will explain the old ways of splitting and shaping wood to make a light, beautiful, and rugged chair.

This meeting will be open to the public. To cover our overhead costs there will be a \$3.00 admission charge for everyone. (See page 3 for more.)

OFFICERS

President	Al Semenero	415-595-1273
Vice Pres.	Bill Henzel	415-349-3062
Secretary	Don Naples	707-433-5234
Treasurer	Linda Salter	415-365-4093
Newsletter	Tony Fanning	415-323-1183

COMMITTEE

CHAIRPERSONS

Program	Stan Booker	510-522-7879
Assist. Prgm	Richard Winslow ...	408 733-9465
Hospitality	Gene Wagg	510-527-5805
Membership	Don Wagg	510-769-8901
Shows	TBD	
Outreach	Don McGrew	415-665-6206
Librarian	Rodney Finlay	415-747-9572

For any questions or information about BAWA programs, contact Stan Booker (eves)

BAWA Meeting Schedules on Page 4

WHEN LAST WE MET Don Naples

Al Semenero began the meeting explaining the prizes to be awarded in the 2x4 contest. First prize was a fifty dollar gift certificate from Tooland, while Second and Third places were twenty-five dollar gift certificates. (See page 5.)

Future programs were discussed including the May meeting which includes three woodworking clubs and a \$3.00 cover charge to cover the fee for the presenter. (See page 3.) The June meeting will be at Woodline and will include a presentation of the Tormek SuperGrind system and accessories. (See page 2.) The July meeting is to be held at a boat builders shop in Sausalito, August at Don Wagg's

(continued on back page)

FROM THE PRESIDENT *Al Semenero*

- Congratulations to all the **2x4 Contest participants and winners**. This year was a great improvement over years past in number of participants. I'm looking forward now to a 1998 contest with double the participants of this year.
- Starting in May I will be calling all our members for input and participation in developing **our first woodworking class**. We will need to determine content, days and times, projects, instructors, supplies, tools, tuition, etc. This class will be open to the public and BAWA members will be given first priority for signup and lower tuition. Most likely, we will run a short Basic Woodworking class with a specific project to build, e.g., a scroll saw project or a box. As you know, we have approximately 50 members to contact. You can help by calling me at any time at 415-595-1273 with your suggestions.
- **Notice: Members of the Board of Directors** and all members: We will meet at the Mainliner Club at 6PM to assist Alexander with program setup. See you there!

TORMEK 2000 UPDATE

At the June meeting at Woodline, BAWA will get a complete demonstration of the **Tormek 2000 Supergrind System**.

The Tormek can easily sharpen anything from chisels to jointer blades.

BAWA will be acquiring a system soon, and members will be able to check it out for use a week at a time for the small charge of \$25.

If you prepay your contribution toward the system, the weekly charge will be reduced to \$20/week.

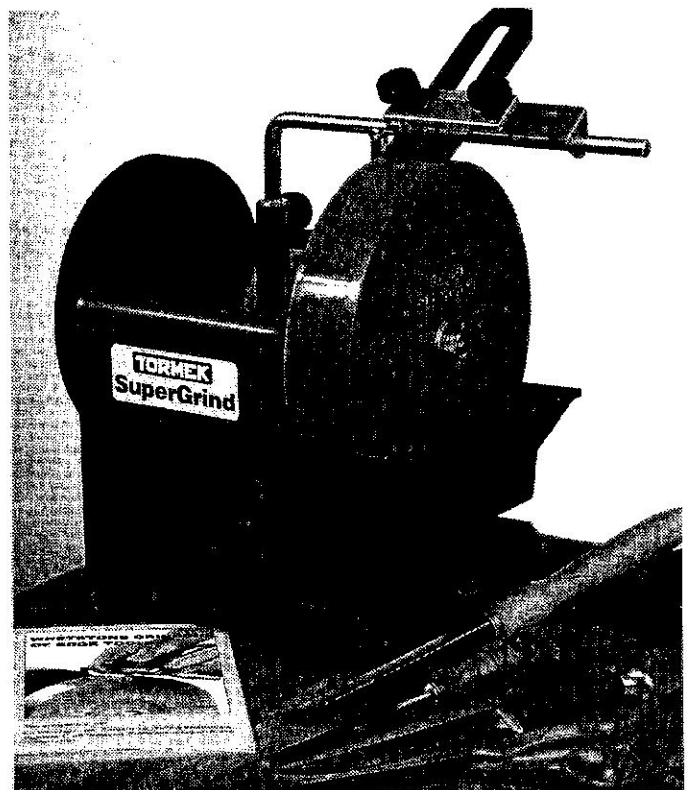
To prepay, contact Linda Salter, BAWA Treasurer, at 415-365-4093.

OUTREACH REPORT *Don McGrew*

At the last meeting, Don McGrew told the group about then current plans for "Christmas in April" to be held in Hunters Point on April 26th. There were seven volunteers from BAWA to be participating in the repairs of the kids' recreation center at that location. **Richard Winslow** explained the site selection process and criteria.

On April 26, **Bill Henzel**, **Don Wagg**, and **Gene Wagg** found a Christmas in April project which took advantage of their unique woodworking skills. They rebuilt a flight of exterior stairs for an eighty-year-old San Francisco couple. They installed a new foundation, did lower landing concrete work, and added new stringers and handrails.

It isn't too early to start *Toys for Tots* work! Contact **Don McGrew** at 415-665-6206 for patterns.



A special BAY AREA WOODWORKERS ASSOCIATION presentation

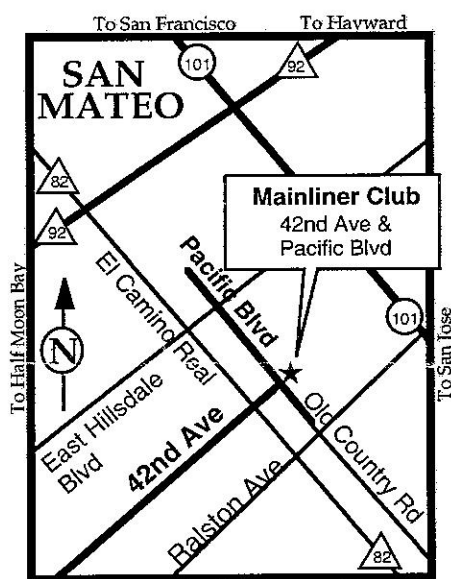
Make a Chair from a Tree

May 15, 1997

7:00PM-10:00PM

**\$3 Admisssion
Open to Public**

**Mainliner Club,
San Mateo**



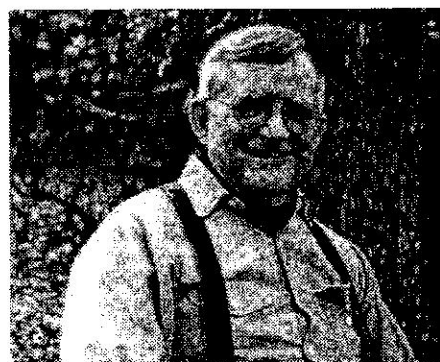
A demonstration of the lost arts of working green wood

When a tree is felled, the wood is green and is easy to cut, split, shave and shape. As it dries, the wood shrinks and hardens--and it becomes vastly more difficult to work. In the old days, woodworkers relied on the ease with which green wood could be worked to make the parts they needed, and on the way wood shrinks to hold these parts together. These old ways have almost been lost, but have been revived for the modern woodworker.

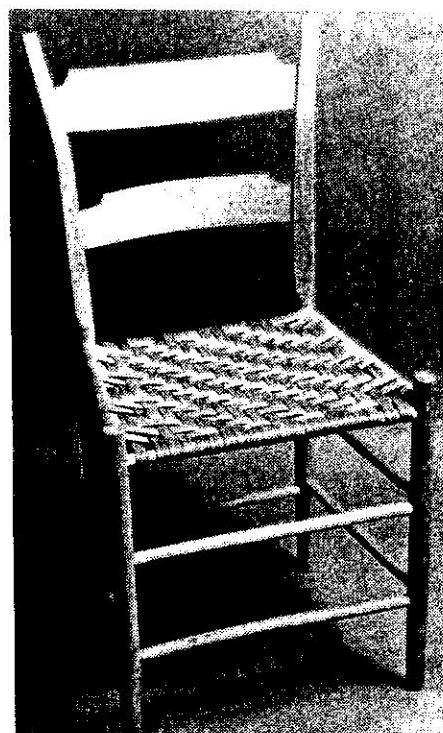
Make a Chair from a Tree is a lively and informative introduction to the old ways of splitting and shaping wood straight from the tree to make a light and beautiful, yet rugged, chair. John Alexander presents a complete guide to making this elegantly simple chair. He tells you how to fell a tree, split suitable pieces from it and shape those pieces into the parts of the chair, how to finish it, and how to weave a bark seat.

Come *early* to this May 15 demonstration!

Taken from *Make a Chair from a Tree: an Introduction to Working Green Wood*, John D. Alexander, Jr., The Astragal Press, 1994



A lifelong student of traditional wood technology - stick chairmaking and joinery - John Alexander has been making chairs for 30 years. He teaches chairmaking and joinery in his shop in Baltimore and at Country Workshops in North Carolina. He travels, researches and lectures throughout the country.



UPCOMING MEETINGS

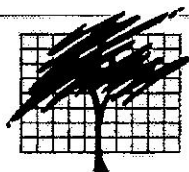
Bay Area Woodworkers Association program schedule for 1997 preview of what we've lined up for the rest of this year's BAWA meetings.

- June 19 At Woodline in Alameda, featuring demo of the Tormek grinder system.
- July 17 Boatmaking in Sausalito.
- Aug. 21 Don Wagg on "Finishing."
- Sept. 18 Don Naples on "Vacuum Hold-down Systems."
- Oct. 16 Arnie Champagne on "Marquetry" (inlaid work of wood).
- Nov. 20 Still need input for this one.
- Dec. 18 Pot luck dinner!

BAWA: Who We Are

The Bay Area Woodworkers Association was formed in 1982 by a small group of dedicated people who felt the need to strengthen the woodworking community by holding regular meetings, establishing an informal forum for the exchange of knowledge and ideas, sponsoring shows, and meeting others in woodworking and related fields. Since then, this non-profit organization has grown to many members.

BAWA meets on the third Thursday of the month at 7:00PM. Meetings usually have a specific topic, such as router techniques, finishing, turning, or business aspects of woodworking; or focus on a distinguished guest speaker who gives a presentation in his area of expertise. Meetings are held at the Mainliner Club in San Mateo or at woodworking shops and businesses in the Bay Area.



**BAY AREA
WOODWORKERS
ASSOCIATION**

Membership Application / Renewal

Name _____

Address _____

City _____ State _____ Zip +4 _____

_____ Work Phone () _____

_____ Home Phone () _____

Profession: _____

Speciality/Interests (List): _____

Skill Level: ☐ Professional ☐ Amateur ☐ Beginner

☐ Please don't circulate my name/address to other organizations.

I would be willing to volunteer for:

- | | |
|--|--|
| <input type="checkbox"/> Elected Officer | <input type="checkbox"/> Greeter for Guests/New Members |
| <input type="checkbox"/> Program Committee or Chairman | <input type="checkbox"/> Hospitality for Guest Speakers |
| <input type="checkbox"/> Nominating/ Election Committee | <input type="checkbox"/> Meeting Set-Up/Clean-Up |
| <input type="checkbox"/> Special Events Coordinator | <input type="checkbox"/> Making Toys for Tots Projects |
| <input type="checkbox"/> Organize Tours-Woodworkers' Shops | <input type="checkbox"/> Outreach and Community Projects |
| <input type="checkbox"/> Trade Show Staff | |
| <input type="checkbox"/> Show and Exhibit Coordination | <input type="checkbox"/> Librarian for Video Library |
| | <input type="checkbox"/> Handling AV Equipment |
| <input type="checkbox"/> Newsletter Articles or Editor | |
| <input type="checkbox"/> Publicity for BAWA in Local Press | <input type="checkbox"/> Other _____ |

Check as many as you want, but check at least one.

BAWA Membership Dues

BAWA dues are currently \$25.00 per year (family memberships are \$30.00 per year) payable by December for the following year.

Membership can begin during any month of the year.

Make check payable to BAWA. Bring it to monthly meeting, or mail it to:

BAWA
PO Box 5481
San Mateo, CA 94402-5481

Membership Application/Renewal

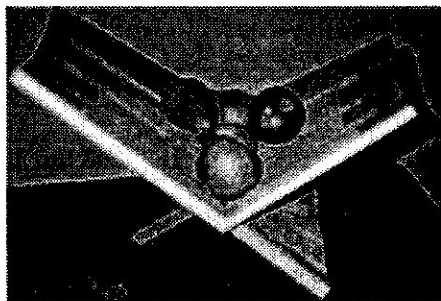
Annual 2x4 Contest

Stan Booker started with the presentation of his entry in the contest and explained the voting



procedure (vote for the one you think is best). Stan's plant table with a checkerboard pattern was developed from an old Women's Day magazine project. Stan finished the clear fir table with two coats of Watco oil and then used carnauba wax to overcome the stickiness of the oil finish.

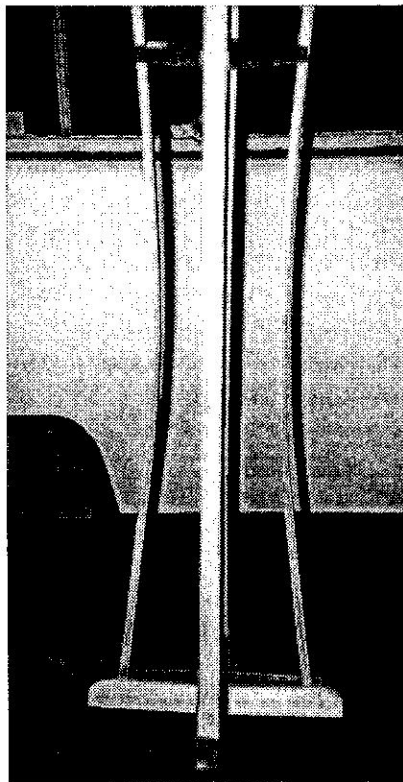
Tony Fanning made a fruit bowl by interleaving what started as feather boards for his new Biesemeyer fence and improvised as he went along. When one of the fingers cracked, Tony cut the rest of the pieces to match thereby reducing the size. Several members were puzzled by how the T-shaped



support leg on one side on the bowl was connected. Tony had covered the extended finger joint connection with a thin veneer of Fir, making the support beam look as though it had nothing solid to connect to.

Bob Hulan based his floor lamp entry on a project in the June issue of Wood magazine. He fought pitch pockets while making the long vertical pole from two pieces of fir, slotted and glued together to produce the channel for the power cord to run through. Spline joint supports attached to the base provided stability for the pole. Bob used a Golden Pecan Minnwx finish and three coats of polyurethane sanded between coats with 600 grit paper rather than steel wool, which leaves bits of steel residue in the finish.

Jerry Robinson presented his plant stand which he developed starting with a foam core scale model to establish the curves to be used on the legs. The four legs were made



of three piece laminations formed on a 2x4 form. Jerry indicated he had about a quarter of an inch

spring-back when the legs were removed from the form. He then used a full scale drawing to pick up the angles needed to mark the dado cuts for the upper and lower tables. He used Constantine's Penetrating Finish and 0000 steel wool to complete the project.

Frank Sainsbury showed a twelve sided bucket (a discussion of dodecahedrons was held, but a bucket is not a solid figure with twelve planes - Sec.) Frank explained how the angle of the edge cut was calculated by dividing 360 degrees by 24. He used Gorilla glue which he said foams and is not as easy to remove as advertised. A piece of line (not rope) is added for a handle and copper paint stripes provide a look of barrel banding.

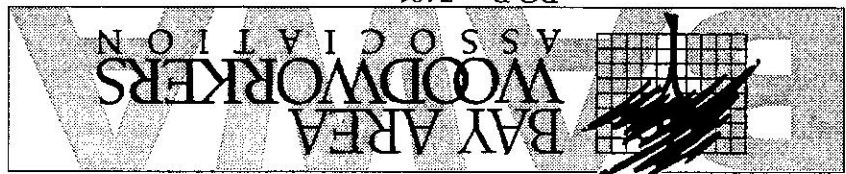
Mark Reed turned a segmented bowl and lid. The segments were made by alternating strips of end grain with the flat surface stock. Mark had difficulty cutting a smooth surface from the alternating grain surfaces. He sanded the surface to overcome this difficulty though the cross grain still sanded faster than the end grain. The end result was quite attractive.

Al Semenero showed a clock and barometer mounted on a mantel style frame made of one tenth inch laminations bent to form an arc over the mounting board surface. Al used Suede-Tex to give the mounting board a velvet appearance. The project was originally planned for just a clock, but when the clock arrived, it was too small to be mounted by itself on the already completed structure. That problem was solved by adding the barometer.

All entries being explained and then examined by the attending members, the votes were counted by **Thaine Anderson** and **Bill Henzel**. First place was awarded to **Tony Fanning**, second place to **Jerry Robinson**, and third place to **Stan Booker**.

Don Naples

San Mateo, CA 94402-5481
PO Box 5481



WHEN LAST WE MET (cont..)



antique shop in Alameda, and September at Tooland for a presentation on vacuum bag veneering.

New members **Bill Nowlin** and **David Reaves** were introduced.

Bill works for PG&E and is interested in developing his scroll saw skills, while **David** works for Lockheed, is a friend of **Richard Winslow**, and is interested in building wall cabinets.

A vote was taken and affirmed on the selection of Tooland as the new home base for BAWA. We will have to acquire chairs and a table for club use. While it provides a year of rent free space for the club, in is not large enough for the Christmas dinner and other large meetings. These will still be held at the Mainliner or other suitable location.

Don McGrew discussed *Christmas in April* (see page 3). The rest of the meeting was devoted



to the judging the annual 2x4 contest (see page 5).

The door prize, an odds and ends box, was won by **Lowell Schissler**.

Don Naples