

BAY AREA WOODWORKERS ASSOCIATION

December 1987 - Vol. 6, Issue 12

Box 421195 San Francisco CA 94142

THIRD THURSDAY PREVIEW

The December meeting will be a brief meeting to handle the semiannual elections, followed by a festive Christmas potluck. Invite your spouse or a friend to join you for this event. Visitors are also welcome at this as well as all of our meetings. In order to make this an enjoyable evening for all, we MUST have an R.S.V.P. by Monday December 14 (537-4096) for the Thursday December 17 event starting at 7:00 pm. The entree will be roast turkey augmented by your contributions of an appetizer, salad, vegetable or dessert for 6-8 people. For those who are unable to bring a dish to share we're asking a \$5. per person donation. Either way ("potluck or pay") the R.S.V.P. is important so the executive board can put together an outstanding event. This will all be located at Steve Madden's at 957 63rd St., #D, Oakland.

Concerning the elections, although some of our members have indicated a willingness to take an office, the vital position of newsletter editor, as well as recording secretary have no potential nominees at this time. Without an editor, we can only send out a postcard to announce the meetings (no room for advertisers); without advertisers we'll not have enough money for postage in a few months and so goes BAWA.....

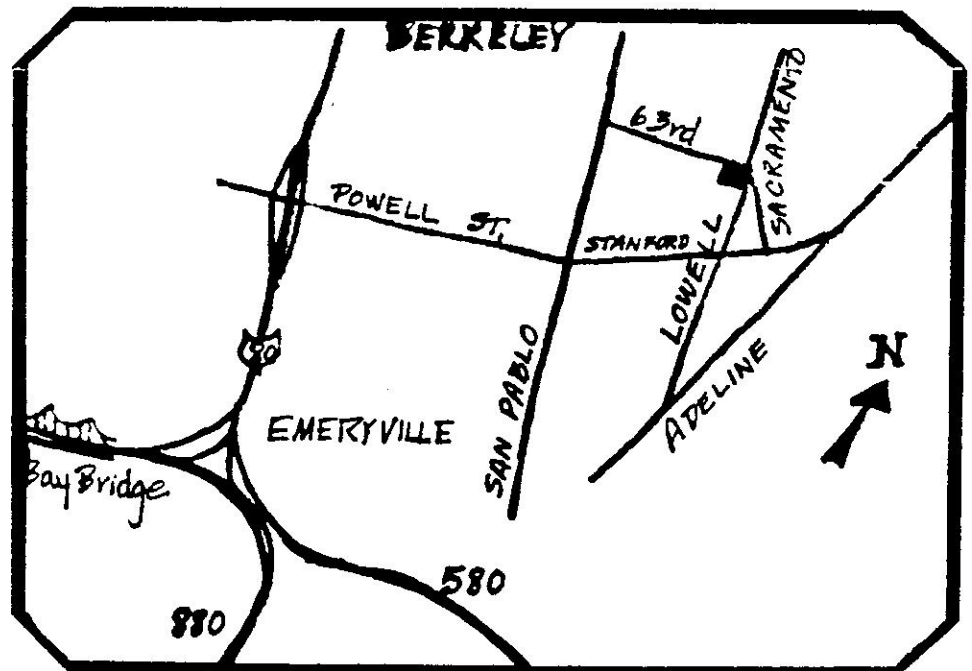
LOOKING BACK

This has been an interesting, educating, sometimes stressful but predominantly enjoyable 6 months for Don and I. It's been a real pleasure sharing the chairmanship with Don and the support of the executive board has been gratifying. I hope more of you will share this experience with your fellow woodworkers in the future. This can be a lonely business, but BAWA's members make me feel anything but alone.

Thank you, Norma

JUMPING TO JANUARY

In January we will be renewing all memberships at \$30. per year. If you want to deduct it for 1987, mail a check now to BAWA, P.O. Box 421195, S.F. 94142. The January renewal as well as quarterly billing of our advertisers is streamlining the treasurer's job and giving us an operating budget for the year. New members joining throughout the year will be prorated by quarter.



HIGHLIGHTS FROM LAST MEETING

On November 19, BAWA met at Don Segale's shop. The subject of this month's meeting was a comparison of face frame and European cabinets. The presentation was put on by three very talented BAWA members: Byron Montague on European and Don Segale and Tim Kennedy on Traditional style cabinets. Byron started off by indicating how the design is laid out. At the shop where he works they do all their design, material take off, and cut list on computer. This contrasts with Tim Kennedy's procedure which involves constructing the faceframe first. All measurements are then fine tuned and the boxes built. Don, however, goes off of drawings first; before any construction begins.

European (frameless) cabinets have edge banding applied to the face compared to Traditional which has a solid faceframe attached to the box. Byron showed some leg levelers and installation techniques that make installing a lot easier. Hardware, cabinets, materials and techniques were shown and compared at this meeting. To tell you the truth, we ran out of time to completely show the total nuts and bolts of these two styles of cabinets. The meeting was very educational and informative.

We also had a guest speaker from Charles McMurray Hardware. Some product information was discussed and we were told that if you need hardware or building related items; Charles McMurray can provide very prompt service. Usually, next day delivery is provided.

Attendance was very good at this meeting. All of you that were not able to attend missed a very informative meeting. We hope to see everyone at the next meeting; it's going to be fun!

Craig Schiemann
recording secretary for November meeting

NOTES FROM EXECUTIVE COMMITTEE

BAWA Executive meeting members met at Don Segale's home in San Bruno. In attendance were Don Segale, Norma Brooks, Dick Taylor, Steve Madden, Peter Good, Ray Ruble, and Craig Schiemann. The issue of advertising was brought up. The BAWA newsletter has had requests for advertisement flyers to be inserted for circulation in the newsletter. For many reasons we have not used this type of advertising. The cost of running a one page ad is more economical than inserting a flyer because of less postage needed and lower printing costs.

Also, the Christmas party was organized for this December's meeting. Further information can be found in the newsletter in regards to this gala event.

Craig Schiemann

**EXOTIC
HARDWOODS
VENEERS PLYWOODS**

Bocote • Padauk • Bubinga • Cocobolo
Zebrawood • Burma Teak • Gonsalve Alves
Brazilian Rosewood • Honduras Mahogany
• Claro Walnut Special! 8/4 @ \$2.75BF •

The Best Quality and Prices in the Bay Area!

MENDOCINO WOODWORKS
4701 San Leandro Street • Oakland, CA 94601 • 436-5702

**U.S.
CELLULOSE
HAS YOUR NEEDS
COVERED.**

with

Solvents	Pigmented Lacquer
Thinners	Lacquer Additives
Reducers	Removers
Stripping Aids	Waxes
Abrasives	Touch-up Supplies
Safety Equipment	Spray Equipment
Clear Lacquers	Adhesives

U.S. CELLULOSE

520 PARROT SAN JOSE CA 95112 (408) 295-0104

FROM THE EDITOR

I wish to take an informal poll of the members to determine which topics for general meetings are of greatest interest to the membership. There is a form (somewhere in the newsletter) to be filled out, and your response will be greatly appreciated.

Thanks alot,

Kate Herald

MEMBERSHIP SURVEY: topics of interest

suggested catagories listed below. Please number in order of interest.

_____ Demonstrations: How-to discussions.

_____ Comparisons presented by multiple speakers regarding specific woodworking procedures/shop methods. (i.e. traditional vs. european faceframes)

_____ Presentations by outside speakers regarding specific aspects of the woodworking business. (i.e. toxic hazards in the workplace)

_____ Presentations by famous woodworkers regarding their work.

continued

_____ Presentations by individual members in their own shops: demonstrating the type of work they do & current work-in-progress.

_____ Slideshows by members regarding travel/tours which relate to woodworking.

_____ Equipment demonstration and discussion of specific machinery and possible uses.

_____ Book reviews by members on available woodworking books and magazines.

_____ Other: (please write in suggestions)

Results will be published in the January edition of the newsletter, which goes to press 1/6/87. Prompt response is appreciated.



CHRISTMAS PARTY DOOR PRIZE

Thanks to Ray Ruble and Terrie Noll's efforts we have a \$50.00 Gift Certificate from the new Woodsmith Store in Berkeley to be given to someone attending the December meeting. The coupon below accompanied by the survey above must be turned in at the door to be eligible for the drawing.



Name _____



WHERE DO WE DUMP OUR DIRTY LACQUER WASTES AND OTHER USED SOLVENTS?

One of the most vexing problems for the small cabinet shop or contractor is the proper disposal of these old solvents. Most shops will have an old five gallon container that they can store these wastes in; alcohol, for shellac clean up, or cleaning the residue of plastic resin glue, acetone, lacquer thinner, mineral spirits; even if we don't do finishing, we seem to have a little of these common solvents around. Finishers, and larger shops with a regular finishing section generate enough waste to make a contract with a Hazardous Waste Disposal company reasonable. But for the small generator that needs to dispose of five to ten gallons a year, there is no place which will accept their wastes. Fine Woodworking magazine has even printed letters about people's methods of disposal; evaporating it behind the shop, etc. .

At this point in time we have an opportunity to influence our local governments to provide facilities for us, and for other small generators (such as painters, mechanics, etc.). State Legislation AB2948, the Tanner bill, is now being implemented and formulated into law at the local level. This bill mandates that every county write their own plan for management of their Hazardous Wastes. There is a citizens' advisory committee to provide input to the professional consulting firm that is writing the plan; here in San Francisco, I am sitting on that committee as the Small Business advisor.

We all know that we have to take care of our world; we live here, there is no place to go if we damage our atmosphere, our soil, our ocean. So, members and friends of BAWA do your part. Please write to me and let me know:

- What you need. How much waste you think you generate, and what it generally is.
- What you want. If you feel a transfer station in your neighborhood would be required, or if one such station in the county would suffice, or whatever ideas you have.

I look forward to hearing from you all in the near future.

Larry Borsian
1775 Yosemite Ave.
San Francisco, Ca 94131 822-1211

547-7257

**5749 LANDREGAN ST.
EMERYVILLE, CA 94608**

**90 LOOMIS ST.
SAN FRANCISCO, CA 94124**

648-7257



MULTITUDINOUS THANKS

Are due to the folks at Woodsmith who have agreed to donate a gift certificate to BAWA that we are using as a door prize at the meeting. If you haven't yet stopped by their new place in Berkeley, I suggest you do so. It's nice and so are they.

DIMENSIONAL CHANGES IN WOODS

copied from U S forest products lab WOOD HANDBOOK

Dry wood undergoes small changes in dimension with normal changes in relative humidity. More humid air will cause slight swelling, and drier air will cause slight shrinkage. These changes are considerably smaller than those involved with shrinkage from the green state (which, use at your own risk). Approximate changes in dimension can be estimated from a simple formula involving a dimensional change coefficient (adjusted for grain direction) when moisture content remains within the range of normal use.

ESTIMATING DIMENSIONAL CHANGES

The dimensional changes for woods with moisture contents between 6% and 14% can be estimated using the dimensional change coefficients listed below and the length of the piece at 10% M.C. by using the following formula:

$$D = D_i [C_t (M_f - M_i)]$$

where: D = Change in dimension
D_i = Dimension at start of change (in inches or other consistent units)
C_t = Dimensional change coefficient (for radial grain use C_r)
M_f = final moisture content in percent
M_i = initial moisture content in percent

Values for C_t and C_r, derived from total shrinkage values are given in the following table. When M_f is less than M_i, the quantity (M_f - M_i) will be negative, indicating shrinkage; when greater it will be positive showing expansion.

As an example, assume the width of a flat-grained white fir board is 9.15 inches when the board is at 8% m.c. Its change in width at 11% m.c. can be estimated as:

$$\begin{aligned} D &= 9.15 \cdot [0.00245 (11 - 8)] \\ &= 9.15 \cdot [0.00735] \\ &= 0.06725 \text{ or } 0.067 \text{ inches} \end{aligned}$$

The dimension after the change will be:

$$D_i + D = 9.15 + 0.067, \text{ or } 9.217 \text{ inches.}$$

The thickness of the board at 11% m.c. can be estimated in the same way, using the radial expansion coefficient, C_r.

The tangential coefficient C_t can be used for both width and thickness if a maximum estimate for dimensional change is desired. The dimensional change for boards neither truly flat- or quarter-sawn is most easily done using C_t.



Van Arsdale-Haines Lumber Co.

595 TUNNEL AVE. • SAN FRANCISCO 94134

SPECIALTY SOFTWOOD

TIM OLIVER (415) 467-8711

QUALITY SAW WORKS



Sales & Sharpening

CARBIDE

Saws • Tools • Cutters
Wood • Metal • Plastic



Planer knives & Hardware
we service the trades

1 LOOMIS
SAN FRANCISCO
(415) 282-3060

Table 14-2.—Coefficients for dimensional change due to shrinkage or swelling within moisture content limits of 6 to 14 percent

Species	Dimensional change coefficient ¹		Species	Dimensional change coefficient ¹	
	Radial C _r	Tangential C _t		Radial C _r	Tangential C _t
HARDWOODS					
Alder, red	0.00151	0.00256	Locust, black	.00158	.00252
Apple	.00205	.00376	Madrone, Pacific	.00194	.00451
Ash:			Magnolia:		
Black	.00172	.00274	Cucumbertree	.00180	.00312
Oregon	.00141	.00285	Southern	.00187	.00230
Pumpkin	.00126	.00219	Sweetbay	.00162	.00293
White, green	.00169	.00274	Maple:		
Aspen, quaking	.00119	.00234	Bigleaf	.00126	.00248
Basswood, American	.00230	.00330	Red	.00137	.00289
Beech, American	.00190	.00431	Silver	.00102	.00252
Birch:			Sugar, black	.00165	.00353
Paper	.00219	.00304	Red oak:		
River	.00162	.00327	Commercial red	.00158	.00369
Yellow, sweet	.00256	.00338	California black	.00123	.00230
Buckeye, yellow	.00123	.00285	Water, laurel, willow	.00151	.00350
Butternut	.00116	.00223	White oak:		
Catalpa, northern	.00085	.00169	Commercial white	.00180	.00365
Cherry, black	.00126	.00248	Live	.00230	.00338
Chestnut, American	.00116	.00234	Oregon white	.00144	.00327
Cottonwood:			Overcup	.00183	.00462
Black	.00123	.00304	Persimmon, common	.00278	.00403
Eastern, southern	.00133	.00327	Sassafras	.00137	.00216
Elm:			Sweetgum	.00183	.00365
American	.00144	.00338	Sycamore, American	.00172	.00296
Rock	.00165	.00285	Tanoak	.00169	.00423
Slippery	.00169	.00315	Tupelo:		
Winged, cedar	.00183	.00419	Black	.00176	.00308
Hackberry	.00165	.00315	Water	.00144	.00267
Hickory:			Walnut, black	.00190	.00274
Pecan	.00169	.00315	Willow:		
True hickory	.00259	.00411	Black	.00112	.00308
Holly, American	.00165	.00353	Pacific	.00099	.00319
Honeylocust	.00144	.00230	Yellow-poplar	.00158	.00289
SOFTWOODS					
Baldcypress	.00130	.00216	Larch, western	.00155	.00323
Cedar:			Pine:		
Alaska-	.00095	.00208	Eastern white	.00071	.00212
Atlantic white-	.00099	.00187	Jack	.00126	.00230
Eastern redcedar	.00106	.00162	Loblolly, pond	.00165	.00259
Incense-	.00112	.00180	Lodgepole, Jeffrey	.00148	.00231
Northern white- ²	.00101	.00229	Longleaf	.00176	.00263
Port-Orford-	.00158	.00241	Ponderosa, Coulter	.00133	.00216
Western redcedar ²	.00111	.00234	Red	.00130	.00252
Douglas-fir:			Shortleaf	.00158	.00271
Coast-type	.00165	.00267	Slash	.00187	.00267
Interior north	.00130	.00241	Sugar	.00099	.00194
Interior west	.00165	.00263	Virginia, pitch	.00144	.00252
Fir:			Western white	.00141	.00259
Balsam	.00099	.00241	Redwood:		
California red	.00155	.00278	Old-growth ²	.00120	.00205
Noble	.00148	.00293	Second-growth ²	.00101	.00229
Pacific silver	.00151	.00327	Spruce:		
Subalpine, corkbark	.00088	.00259	Black	.00141	.00237
White, grand	.00112	.00245	Engelmann	.00130	.00248
Hemlock:			Red, white	.00130	.00274
Eastern	.00102	.00237	Sitka	.00148	.00263
Western	.00144	.00274	Tamarack	.00126	.00259

Table 14-2.—Coefficients for dimensional change due to shrinkage or swelling within moisture content limits of 6 to 14 percent—continued

Species	Dimensional change coefficient ¹		Species	Dimensional change coefficient ¹	
	Radial C _r	Tangential C _t		Radial C _r	Tangential C _t
IMPORTED WOODS					
Andiroba, crabwood ..	.00137	.00274	Light red "Philip- pine mahogany" ..	.00126	.00241
Angelique00180	.00312	Limba00151	.00187
Apitong, keruing ² (All <i>Dipterocarpus</i> spp.)00243	.00527	Lupuna00126	.00230
Avodire00126	.00226	Mahogany ³00172	.00238
Balsa00102	.00267	Meranti00126	.00289
Banak00158	.00312	Nogal ³00129	.00258
Cativo00078	.00183	Obeche00106	.00183
Emeri00106	.00169	Okoume00194	.00212
Greenheart ³00390	.00430	Parana pine00137	.00278
Iroko ³00153	.00205	Pau marfim00158	.00312
Ishpingo ³00125	.00205	Primavera00106	.00180
Khaya00141	.00201	Ramin00133	.00308
Kokrodua ³00148	.00297	Santa Maria00187	.00278
Lauans:			Spanish-cedar00141	.00219
Dark red "Philip- pine mahogany" ..	.00133	.00267	Teak ³00101	.00186
			Virola00183	.00342
			Walnut, European00148	.00223

¹ Per 1 pct. change in moisture content, based on dimension at 10 pct. moisture content and a straightline relationship between the moisture content at which shrinkage starts and total shrinkage. (Shrinkage assumed to start at 30 pct. for all species except those indicated by footnote 2.)

² Shrinkage assumed to start at 22 pct. moisture content.

**ABRASIVES • BANDSAWS • BORING MACHINES² • DRILL PRESSES
DUST COLLECTORS • EDGE BANDERS • FEEDERS • JOINTERS •
LATHES • MOULDERS ROUTERS • PANEL SAWS • PINCH
ROLLERS • PLANERS • PORTABLE TOOLS • SHAPERS • TABLE
SAWS • TOOLING • WIDE BELT SANDERS • AND MUCH MORE!**

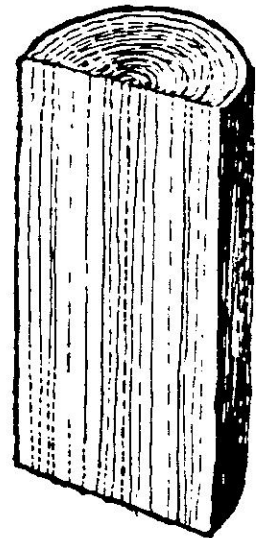
KLOR

MACHINERY INC.

"SERVING THE WOODWORKING AND PLASTICS INDUSTRIES"

16055 A CAPUTO DRIVE
MORGAN HILL, CA 95037

(408) 779-1910
FAX (408) 778-0565



Getting Paid— The Mechanic's Lien Law

By Denise Olrich, Attorney at Law

Senario: Steve Slack, the famous San Francisco interior designer, was hired by Fly-By-Nite Construction Company to prepare a design for remodeling of a kitchen and bath for a home recently purchased by Penny Pinch. Fly-By-Nite obtains the fixtures and appliances from the kitchen and bath showroom of Pat Prudence, who doesn't require a deposit as she normally would since she has done so much business with this contractor in the past. Slack agrees to prepare the design for a reduced, flat hourly rate since he too gets so much business from Fly-By-Nite.

As their name might lead one to expect, Fly-By-Nite flew the coop immediately when the job was completed, leaving Prudence and Slack holding the bag with their unpaid invoices. Pinch says that she paid the contractor and isn't responsible to either. Can Slack or Prudence collect?

Fortunately, Prudence had sent a copy of her invoices to Pinch by certified mail at the time the goods were shipped. This is fortunate for the reason that Prudence's invoice contains a preliminary notice of her right to place a mechanic's lien on Pinch's property.

The California Mechanic's Lien Law generally provides that anyone who furnishes labor, services, equipment on materials has a lien on the property for which such materials, etc., were provided. California Civil Code Section 3110. However, unless one is in direct contract with the owner (or other specific circumstances set forth in Civil Code Section 3097), one must give a preliminary notice to the owner of the property within twenty (20) days after the claimant has first furnished materials, etc., to the job site, containing information including a description of the items, the claimant's name and address, the contracting party's name, a description of the job site, and including very specific language prescribed by

that statute advising the owner of your right to enforce a mechanic's lien on the property.

If the preliminary notice is not timely given, it can be given later, but the claimant will then only be entitled to a lien for the materials, etc., furnished within twenty (20) days prior to the service of the notice. Service by certified or registered mail is complete upon mailing.

Prudence, in this instance, has complied since Civil Code Section 3097 provides in part that, "If an invoice for materials contains the information required by this section, a copy of the invoice, transmitted in the manner prescribed by this section shall be sufficient notice." Since she sent the invoice to Pinch by certified mail, she has complied and can then record her mechanic's lien in the county where Pinch's house is located.

If the recording of the lien isn't enough to get Pinch to pay her, Prudence can enforce her lien by filing suit within ninety (90) days

of recording her claim of lien. As one can easily observe, strict and short time limits govern one's ability to properly perfect and enforce mechanic's lien.

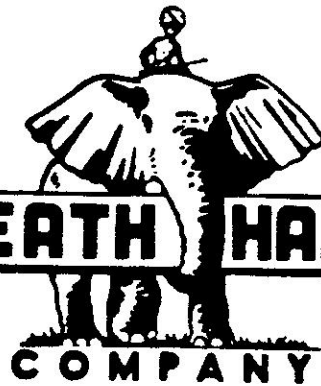
In this case, Slack, who has a hard time staying on top of his paperwork, has not given Pinch a preliminary notice. Although he can sue Pinch for the money, he will not have the clout possessed by Prudence derived from her ability to enforce her mechanic's lien.

When starting a job, one should first determine whether a preliminary notice is required. Even if it is not required under the mechanic's lien law, strict time limits regarding one's right to record a lien apply. As this is a very complicated and technical area of the law, you are well advised to seek the advice of an attorney regarding application of the mechanic's lien laws to a particular job.

Ms. Denise Olrich is an attorney with the firm of Stokes, Welch & Stromsheim, located at 160 Sansome Street, 5th Floor, San Francisco, California, 94104 and may be reached at (415) 397-4100. ■

MacBEATH HARDWOOD

930 ASHBY AVENUE
BERKELEY, CA 94710
(415) 843-4390



2150 OAKDALE AVENUE
SAN FRANCISCO, CA 94124
(415) 647-0782

MacMURRAY PACIFIC



Stocking thousands of hardware products from over 100 manufacturers. Accuride, Baldwin, Schlage, Grass, KV, Grant, McKinney.

Open 8 AM to 5 PM Monday - Friday.
Will Call Hours: 8:30 to 11:30 AM
1:00 to 4:00 PM

(415) 552-5500 568 Seventh St San Francisco, CA 94103

THRILLS! SURPRISES!

Although members have volunteered, or accepted nominations, for some positions on the BAWA staff, there are other positions that are as yet unfilled. Kate Herald is retiring from editorship of the newsletter, Peter Good is also retiring from the newsletter, and yr. humb.& obd. svt. (heh!) can't take over right now, because I'm being pushed by a customer to do work for them. (ugh!) If we can't find somebody to take over the newsletter, we may have to discontinue it, which would mean all the no-shows would have to turn up for meetings in order to find out what the rest of us were up to. How inconvenient! Worse, we do not yet have someone to handle hospitality for the next term, which could mean no more coffee and doughnuts (or beer, if you'd rather) at the meetings. Catastrophe! Seriously, we need volunteers who can spend even small amounts of time helping their organization.

PRIZES EVEN!

STARTING IN JANUARY, we are initiating a door prize. The first prize is a \$50.00 (we're serious!) gift certificate from Woodsmith in Berkeley. There will be a drawing to determine the winner at the meeting. The drawing will be made from the names on the '87 BAWA phone list. If the member whose name is drawn is present, they win. If not, we hold the prize over to the following month, and draw again. Which reminds me... If you're not on the phone list, as a member you should be. Call me (Ray Ruble) at (408) 247-0848 and I'll correct the oversight.

REMEMBER TO R.S.V.P!
REMEMBER TO R.S.V.P!
REMEMBER TO R.S.V.P!

I'm trying to burn it into your brain. REMEMBER TO CALL NORMA! (415) 537-4096 It only takes a minute, and her phone has a recorder if she's not there. We really do need to know how many hungry people we have to feed. Call her PRETTY PLEASE!

DUE WAH!

This is our second year of annual dues collection for all members in January. All members dues are due as of 1-1-88. If you want to deduct dues from this year's taxes, you should pay while it's still 1987. Otherwise, you have until January to find the \$30.00. Along about mid-February I plan to introduce whoever is then the treasurer to my friend Umberto. Umberto stands 7 feet 2, weighs 350, understands a little English, and enjoys breaking things. Right now he is working evenings, for a small Sicilian insurance company. Umberto owes me a couple of favors and would be glad to help our new treasurer. Besides, he would think it was fun.

CLASSIFIEDS

For Sale: Rockwell/Delta Lathe = \$400.00. Older cast iron Shaper = \$400.00. Horizontal Milling Machine set up as mortiser = \$750.00. Hamilton Drafting Table (44"x72") with 72" parallel rule and older Bruning Drafting Machine = \$475.00 (many extras). Contact: Nacio Jan Brown, 849-9495.

Martin De Porres House of Hospitality: located at 225 Potrero Ave., S.F., Ca. 94103 is seeking donations for the operation of its daily soup kitchen and special Christmas dinner. They feed on the average 600 needy people a day through the help of donations and volunteers. Please celebrate the holiday spirit with giving.

Help Offered: Member seeking a position in a woodworking company. Experience = studied at the Grew-Sheridan Studio. Contact: Christian 695-0728.

876 La Para Avenue
Palo Alto, California 94306

November 18, 1987

Bay Area Wood Working Association
Post Office Box 421195
San Francisco, California 94142

Re: Fine Woodworking Magazine

Dear Sir or Madam:

A friend just recently referred me to your organization, saying one of your members might be able to help me. I am trying to complete my father's subscription to Fine Woodworking Magazine, and to locate some of the old issues that he's lost or didn't receive. Perhaps if you could put my note on a bulletin board, anyone having the missing issues for sale would be able to contact me independently.

I want to buy issues number 2, 4, 6, 11, and 15. If anyone has any of these issues for sale, please contact me either by mail at the above address, at 415-321-8883 during the day, or at 415-493-3466 during the evenings.

Thanks for your help!

Sincerely,

Stephanie A.E. Mulroony

Stephanie A.E. Mulroony

Many Central Americans seeking refuge in our country would like to continue their carpentry but lack the tools. Each of us have tools stuck in some forgotten place in our garages, shops and basements. These forgotten or little used tools could help support a family now struggling in our country. If you can help with a donation of both hand and power tools; please call Bruce or Jill Thomas-Bignami at (415)939-8784. We will pick up if needed or just bring them to the next BAWA meeting.

NOW YOU HAVE A LOCAL SOURCE FOR

CUSTOM PANEL LAYUPS

BDS

(Buchner Design Studio)

1030 Quesada Ave

San Francisco, CA 94124

415-822-7300

- Any face veneer
 - Any backer
 - Any core
- Press size 52" x 118"
(can step press much larger)
- Fancy faces:
Diamonds, reverse diamonds,
sunbursts
- Normal lead time 2-3 weeks
- Rush orders for additional charge
- Sanding to 8' with grain direction

• HIGHEST QUALITY

Member. Architectural Woodwork Institute

SCORE

SERVICE CORPS OF RETIRED EXECUTIVES
ACTIVE CORPS OF EXECUTIVES (ACE)
sponsored by the
U.S. SMALL BUSINESS ADMINISTRATION

HERBERT BAUM SCORE CHAPTER 10

211 Main Street, San Francisco, CA 94105 - (415) 974-0599

THE WHO, WHAT, HOW, WHY AND WHEN OF S.C.O.R.E.

WHO are we?

The Service Corps of Retired Executives, sponsored by the United States Small Business Administration. We are men and women who had successful careers in management and ownership and operation of our own businesses and are now retired.

WHAT do we do?

We give free counseling services to owners and managers of small businesses. We give free counseling to people who have never been in business and want to start a business. We counsel people who wish to buy or sell a business. We are management consultants working as volunteers.

HOW do we do it?

As volunteers, it is our pleasure to help persons needing the advice and counsel of people who have many years of experience in the business sector. This service is free for the asking and, thanks to the Small Business Administration under whose sponsorship we operate, SCORE counsels in finance, accounting, record-keeping, business management, taxes, marketing, sales promotion, advertising and special areas of retailing, manufacturing, sales and service businesses.

WHERE are we located?

Call (415) 974-0599 in San Francisco and ask for an appointment with a counselor. Or you can write to SCORE, U.S. Small Business Administration, 211 Main Street, 4th Floor, San Francisco, CA 94105. If you are too distant from the San Francisco office, they will give you the address and phone number of a field office closer to you.

AURA HARDWOOD LUMBER,

HARDWOODS • HARDWOOD PLYWOODS • OAK • CHERRY • ASH
• WALNUT • BIRCH • MAHOGANY • TEAK • ALDER • MAPLE
• POPLAR • BASSWOOD • EXOTICS

DOMESTIC & IMPORTED HARDWOOD LUMBER & PLYWOOD
HARDWOOD FLOORING • NAIL GUN RENTAL • STAIR PARTS
• BUTCHER BLOCKS • MOULDINGS • VENEER • PANELING • COATED
& RAW PARTICLE BOARD • DOWELS • FINISHINGS & GLUE
• TRUCK DECKING • MILL WORK FACILITIES

CONTRACTOR DISCOUNTS RETAIL - WHOLESALE

SAN JOSE OPEN 8:30 TO 5:30 MON-FRI/10-3 SAT. 408 275-1990 210 PHELPS AVE. SAN JOSE	SANTA CRUZ OPEN MON-FRI. 8 TO 4:30 408 462-1525 1115 THOMPSON AVE. SANTA CRUZ
--	---



advantage
vinyl products

VINYL DRAWERS MADE TO ORDER
& DELIVERED WITHIN ONE WEEK

536 Stone Road, Suite F (800) 962-2001
Benicia CA 94510
(707) 746-5813


FOR YOUR INFORMATION

Herald, Street & Benjamin; specialists in fine finishes for furniture, cabinetwork and interiors since 1980.

faux finishes
 polished polyester
 premium lacquer
 leafing
 glazing
 stains
 antique

casein
 texture
 crackle
 zolotone
 linen
 spatter
 color matching

For an appointment to discuss your specific needs, contact Kate Herald, 431-7735.



HARDWOOD LUMBER & PLYWOOD
White Brothers Hardwoods Since 1872

RETAIL-WHOLESALE
 Red Oak • White Oak • Birch
 Maple • Walnut • Ash • Cherry
 Teak • Exotics
 Custom & Stock Moldings
 Laminated Maple Tops
 Hardwood Dowels

Open
 M-F 8-5 pm
 SAT 8:30 - 2 pm

415-261-1600 WE DELIVER
 4801 Tidewater Ave., Oakland Nimutz Fwy to High St



decore-ative specialties

CUSTOM CABINET DOORS

- OVER 90 DESIGNS IN WOOD OR LAMINATE
- ALL ORDERS SHIPPED IN TEN DAYS OR LESS
- CUSTOM DESIGNS ALSO AVAILABLE

Ken Larimer
 NORTHERN CALIFORNIA OFFICE
(415) 449-2125

Toll Free Sprint Phone No. 950-0777
 Wait for Dial Tone, Then Dial 664-4473

4414 No. Azusa Canyon Road, Irwindale, CA 91706




822-3221


Counter Tops and Custom Fabrication in Plastic Laminates and Corian

Whether you want to buy materials to fabricate yourself, or to subcontract a complete installation, call Western Plastics for all brands of plastic laminates and solid surfacing materials. Our prices are competitive, and our quality and service are outstanding.

1440 Bancroft Ave. San Francisco, CA 94124
 Monday — Friday 8:00 a.m.—4:30 p.m.

BAWA EXECUTIVE BOARD

Chairman	Don Segale Norma Brooks	589-4890 537-4096
Secretary	Cynthia Hungington Craig Schiemann	822-1296 (707)745-5878
Treasurer	Steve Madden Dick Taylor	654-3332 846-3647
Advertising	Tim Kennedy	822-1712
Newsletter	Kate Herald Ray Ruble Terrie Noll Craig Schiemann	431-7735 (408)247-0848 759-1066 (707)745-5878
Corresponding Secretary	Peter Good	530-3198
Hospitality/Membership	Henry Schiff Byron Montague	233-8098 527-1441
Mailing List Coordinator	Don Dupont	831-9754



offer a large selection of fine woodworking tools for the shop and professional carpenter at the lowest prices.

WHOLE EARTH ACCESS

OPENTIME From Sat 10:5 To 11:5

BERKELEY 214 G. Ashby, 845 3000

SAN FRANCISCO 401 Bayshore Blvd. 285 5244

SAN RAFAEL 863 E. Francisco Blvd. 459 3533

QUALITY HARDWOOD PRODUCTS

Specializing in hardwood lumber, plywood, sheet goods and related products

Patrick Kozisek (415) 732-9560

SARTOR SAW WORKS

All Saws Sharpened or Repaired • Pick-up/delivery Sales & Prompt Service

Carbide Saws and Router Bits Our Specialty

250 Bayshore Blvd., San Francisco
Phone: (415) 282-6093

BAWA DATA

The Bay Area Woodworkers' Association is an organization of woodworkers who have banded together to promote woodworking in both technical and aesthetic directions. This newsletter is a monthly publication intended to serve as a communications vehicle and a source directory for the membership of this Association.

Membership dues are \$30/year, for which any member may participate fully in the Association, in accordance with the guidelines set forth in the By-Laws. This includes voting power on any issue brought before the membership for a vote, notification of the monthly shop talks and demonstrations put on by the Association, receipt of this newsletter each month, and privilege of participation in any special discount programs sponsored by local businesses in conjunction with this Association.

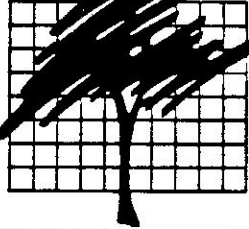
Checks for membership dues may be made out to the Bay Area Woodworkers' Association and sent to P.O. Box 421195, San Francisco, CA 94142. Membership cards will be issued to all members in good standing.

Copies of the By-Laws are available at all monthly meetings, or can be requested by mail.

The monthly shop talks and demonstrations are held on the third Thursday of each month at 7:30 p.m., at a location announced both in the newsletter and at the previous meeting.

The monthly executive committee meetings are held on the fourth Thursday of every month, and are open to any interested members. To arrange attendance, contact any member of the executive committee by telephone or the address given above.

BAY AREA WOODWORKERS ASSOCIATION



BAY AREA WOODWORKER'S ASSOC
POST OFFICE BOX 421195
SAN FRANCISCO CA 94142



PAID BY ADDRESSEE
BAY AREA WOODWORKERS ASSOCIATION
421195 BOX
SAN FRANCISCO, CA 94142
1/2/87

ADDRESS CORRECTION REQUESTED
DO NOT FORWARD